

# ASU is serving learners at every stage of life

**2025 report**

Prepared by

**ASU** Learning  
Enterprise  
Arizona State University



# ASU Charter

ASU is a comprehensive public research university, measured not by whom it excludes, but by whom it includes and how they succeed; advancing research and discovery of public value; and assuming fundamental responsibility for the economic, social, cultural and overall health of the communities it serves.

# Learning Enterprise mission

The Learning Enterprise expands universal access to opportunity for learners — **at every stage of life.**



## Letter from the executive vice president

Page 6–7



## About ASU Learning Enterprise

Page 8–13



## ASU learners at a glance: FY24

Page 14–15

A comprehensive snapshot revealing the diverse and dynamic landscape of learners served by ASU in Arizona, the United States and across the globe, encompassing age diversity, learning offerings and more.



## K–12 learning offerings

Page 16–35

Creating a continuum of learning that ignites curiosity and innovation among K–12 learners and offering cutting-edge growth opportunities for K–12 educators.



## Universal Pathways

Page 36–43

Unlocking higher education access for all and ensuring learners are ready to thrive in college and beyond.



## Career and professional development

Equipping professionals at every career stage with the skills to thrive in a rapidly-changing economy.

Page 44–85



## Personal, cultural and civic learning

Fostering an environment where learners can broaden their horizons, access community and engage effectively with diverse cultures and viewpoints.

Page 86–99



## Open learning

Breaking down barriers and making education accessible to learners around the globe.

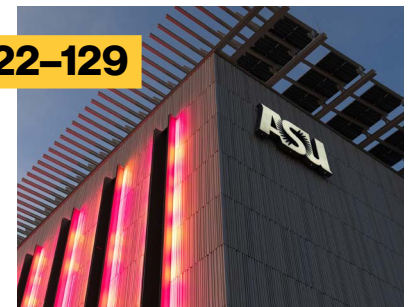
Page 100–121



## ASU team serving learners

ASU team members who serve learners across Arizona, the United States and all over the globe.

Page 122–129



# Letter from the executive vice president



**Maria Anguiano**

**Executive Vice President**  
Learning Enterprise  
Arizona State University

## To our learners, our ASU community and our global partners:

For millions, the promise of a higher education — a chance to build skills, shape their futures and enable new possibilities — still feels out of reach. More than 60% of adults in the U.S. lack a college degree and nearly three-quarters of workers need new skills to advance their careers. In the face of a rapidly evolving global society and workforce, learners are asking for change, flexibility and real pathways to growth.

How can we as a learning community respond to these needs, making education accessible, adaptable and inclusive to help everyone reach their full potential?

At ASU, we believe that learning should be accessible to all, adaptable to each person's path and available at every stage of life. We're making this vision a reality every day, cultivating a model of education that grows with each learner and equips them with the confidence and opportunities to embrace change on their terms.

As we enter 2025, fields including AI, sustainability and healthcare continue to evolve rapidly, underscoring the importance of a lifelong approach to learning. ASU is at the forefront of this shift, creating flexible pathways that empower individuals to adapt, innovate and succeed in a dynamic world. None of this would be possible without you — our learners, colleagues and partners — who share this vision and bring it to life daily.

Together, ASU has taken bold steps to expand access to learning:

- ▶ **1M+ lifetime learners** have enrolled in offerings across every ASU school and college, building knowledge and skills in flexible formats that meet them wherever they are. In **FY24, ASU served 430,000+ learners** — both new and continuing — advancing their personal and professional growth.
- ▶ **6,000+ learners** have earned admission to ASU undergraduate programs through the Earned Admission pathway since its inception, showcasing how resilience opens doors at any stage of life. This includes a **60% increase** in total earned admissions in FY24.
- ▶ **22,000 high school students** and **500+ schools** nationwide have participated in ASU college courses through Accelerate ASU, gaining college credit, skills and confidence. In **FY24, 8,000+ learners** took part, representing both new and ongoing engagement with learners from **250 high schools** across the nation.
- ▶ **893,000+ professionals** have advanced their careers through ASU's upskilling programs, preparing for roles in emerging fields. In **FY24, 198,000 professionals** engaged in these programs, reflecting a continued focus on workforce transformation.
- ▶ **7M+ young learners** have explored science through ASU's "Ask a Biologist" program over its lifetime, sparking curiosity through interactive experiences with experts.

These milestones reflect lives touched, barriers broken and futures transformed. They represent ASU's commitment to an adaptable education system that creates inclusive, meaningful pathways for lifelong growth.

Our vision for inclusive learning has also expanded globally through partnerships in Latin America — with programs launched in Mexico, Colombia and Argentina — as well as in Kosovo, Saudi Arabia and more. Today our learning offerings now reach learners in 140+ countries worldwide. Together with our partners, we are building thriving communities ready to address the unique challenges and opportunities of a globalized world.

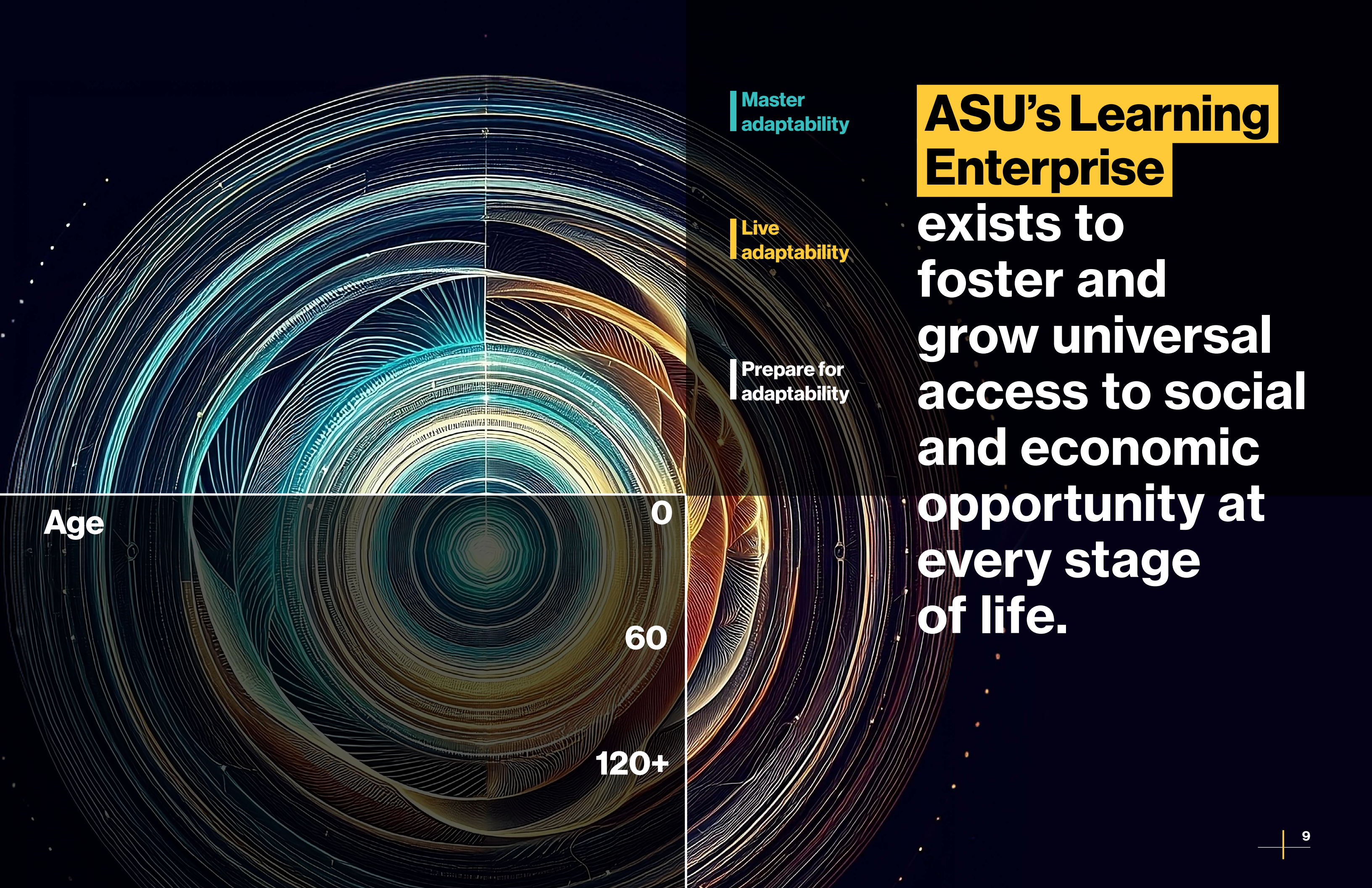
With thousands of dedicated ASU staff and faculty across the university's schools, colleges and units supporting these learning offerings, we are building a future together where access to learning is not limited by geography, language or resources.

The progress we've made reflects a collective dedication to creating pathways that support growth for every learner. To everyone in the ASU community and our global partners, thank you for making this vision possible. Your commitment is shaping a future where education empowers all learners to reach their fullest potential.

Warm regards,

**Maria Anguiano**





Master  
adaptability

Live  
adaptability

Prepare for  
adaptability

Age

0

60

120+

# ASU's Learning Enterprise

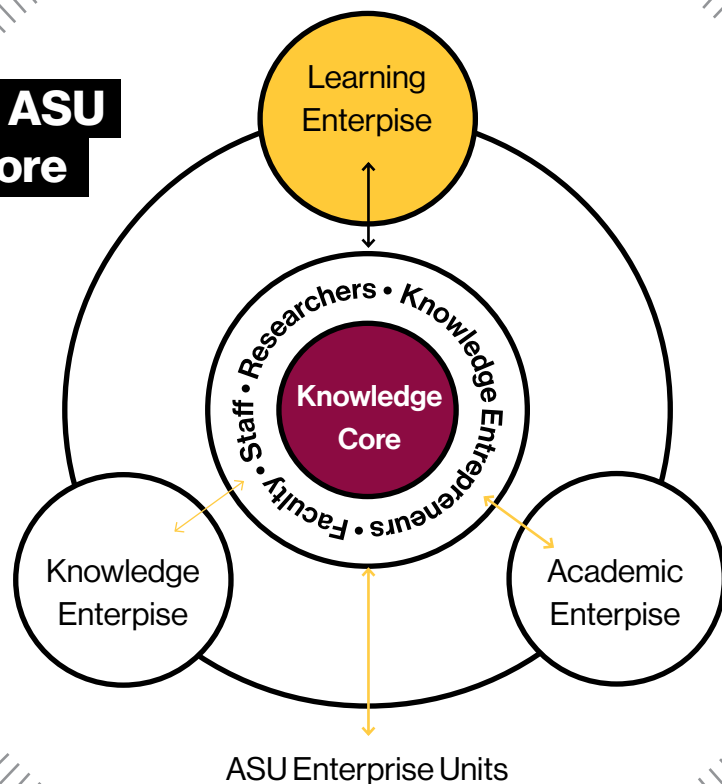
exists to  
foster and  
grow universal  
access to social  
and economic  
opportunity at  
every stage  
of life.



About the

# Learning Enterprise

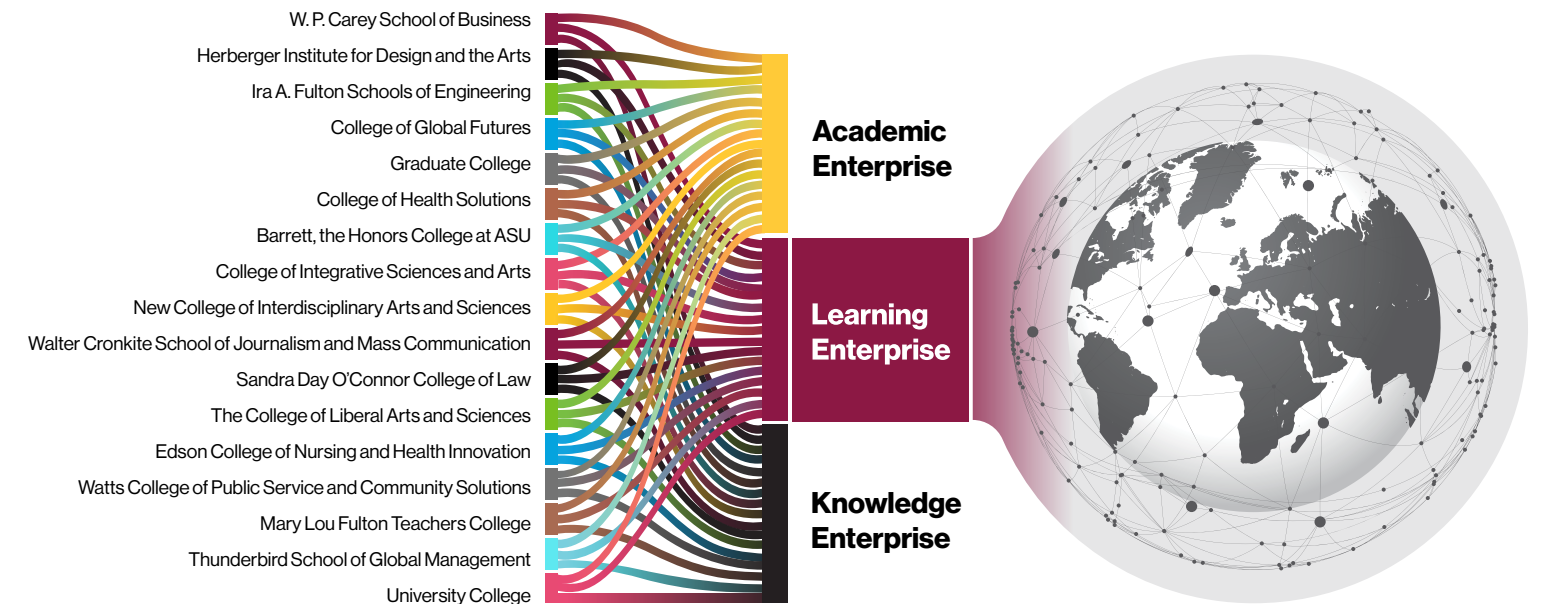
Powered by the ASU Knowledge Core



**ASU's Learning Enterprise** expands universal access to opportunity for learners — at every stage in life. We're reimagining the role of universities in society as catalysts of economic and social mobility, guided by the belief that all learners can harness education as an effective ladder to achieving their goals.

As the world rapidly evolves, with technology fueling change across learning and working, the Learning Enterprise is designed to address the most pressing needs of learners, the workforce and our communities.

ASU's Schools, Colleges, Centers and non-academic units oversee the day-to-day operations of many offerings presented in this report. Their role as part of ASU's Knowledge Core and the Learning Enterprise is crucial to support learners, employers and society overall. This collaborative framework is fundamental to ASU's mission of expanding access and enabling success across all stages of learning.



**As one of ASU's three pillars** — alongside Academic Enterprise and Knowledge Enterprise — Learning Enterprise leverages the ASU Knowledge Core to grow a lifelong learning ecosystem that promotes human adaptability and transforms education worldwide.





This report highlights ASU's learner-oriented **milestones and achievements of the 2023–24 academic year** across several areas:

**01**

**K-12**

Creating a continuum of learning that ignites curiosity and innovation among K-12 learners and offering cutting-edge growth opportunities for K-12 educators.

**02**

**Universal Pathways**

Unlocking higher education access for all and ensuring learners are ready to thrive in college and beyond.

**03**

**Career and professional development**

Equipping professionals at every career stage with the skills to thrive in a rapidly-changing economy.

**04**

**Personal, cultural and civic learning**

Fostering an environment where learners can broaden their horizons, access community and engage effectively with diverse cultures and viewpoints.

**05**

**Open learning**

Breaking down barriers and making education accessible to learners around the globe.



# ASU learners at a glance: FY24



**430K+**

learners enrolled in FY24



**55M+**

educational experiences in FY24

**2,000+**

partnerships with educational, nonprofit and corporate organizations connecting learners to ASU

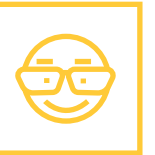
## Promoting human adaptability in Arizona, all 50 U.S. states and 140 countries worldwide

through thousands of offerings and millions of learning experiences

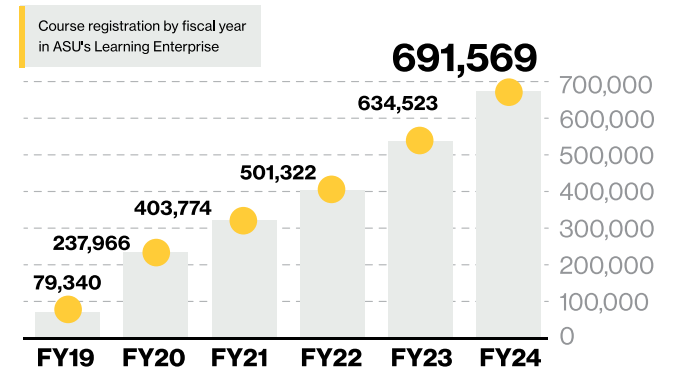


Youngest learner is **1 year and 10 months old**

Eldest learner is **96 years old**



ASU serves learners from K–12, career development and beyond. We're evolving the American research university model, providing learning to everyone with accessible digital learning tools and resources for all ages. ASU works in 2,000+ partnerships, collaborating in education, industry and community sectors across 140 countries.



### Arizona

- ▶ **Transforming K–12 education:** ASU Prep served 7,280 learners across Arizona schools with accelerated pathways and innovative instructional support.
- ▶ **Driving workforce growth:** Collaborations with Intel, TSMC and more prepare Arizona's workforce for over 25,000 high-tech jobs, solidifying the state as a hub for microelectronics and innovation.

### USA

- ▶ **Expanding universal access:** ASU partnered with 250 high schools nationwide, enrolling over 8,000 high school learners in Accelerate ASU college-level courses.
- ▶ **Training industry leaders:** Workforce upskilling programs for top companies such as Deloitte, Google and McKinsey, address skill gaps in AI, healthcare and leadership.

### Global

- ▶ **Key global partnerships:** Collaborations with organizations in Latin America, Asia, Africa, Europe and the MENA region were deployed throughout 2023–2024, breaking key barriers such as language, relevant content and contextualization.
- ▶ **Creating a global ecosystem:** Global Launch programs have supported learners around the world, while The Najafi Global Learners Initiative delivers multilingual online leadership and management courses to learners worldwide, equipping them to drive change in their communities.



# 01



## K-12 learning offerings

**ASU is reshaping K-12 education, creating a continuum of learning that ignites curiosity and innovation.** Programs like **Access ASU** and **Ask A Biologist** engage learners through interactive and exploratory content, while **ASU Preparatory Academy** personalizes the educational journey with a focus on individual learning needs and robust professional development to enhance teaching practices.

**Dreamscape K-12** transforms learning through immersive, virtual experiences, enabling learners to explore complex concepts in subjects like biology and art history in ways traditional classrooms cannot replicate.

The **Edson Entrepreneurship + Youth Entrepreneurship Program** integrates real-world applications into classroom learning and **me3** empowers learners to explore college and career pathways that align with their passions and goals.

The **Next Education Workforce** initiative advances team-based models that foster collaboration among teachers and learners and the **ASU Professional Educator Learning Hub** supports educators with flexible, self-paced courses that deepen skills, foster innovation and build toward advanced academic credentials.

### In this section

- ▶ **Access ASU**
- ▶ **Ask a Biologist**
- ▶ **ASU Preparatory Academy**
- ▶ **ASU Prep professional development**
- ▶ **Dreamscape Learn K-12**
- ▶ **Professional Educators Learning Hub**
- ▶ **Edson E+I Youth Entrepreneurship**
- ▶ **me3**
- ▶ **Next Education Workforce**





# Access ASU

 [eoss.asu.edu/access](https://eoss.asu.edu/access)



Access ASU is dedicated to increasing access to higher education and preparing Arizona learners for success through family engagement, strategic K-12 education, community and industry partnerships. Access ASU's programs and initiatives are designed to ensure Arizona learners graduate high school ready to thrive in college and the 21st-century workforce.

## Key highlights



### 177,380+

**learner touchpoints:** engaging learners in college readiness and career exploration programs



### 45,210+

**high school experiences:** delivered through federal TRIO and GEAR UP pre-college grant programs



### 1,200+

engagements with Foster Youth, Caregivers and Case Managers through First Star ASU



### 9,000+

families served through WeGrad family education network



### 2,210+

families served through Hispanic Mother Daughter Program (HDMP)

## Celebrating 40 years of empowerment: The Hispanic Mother-Daughter Program at ASU

The Hispanic Mother-Daughter Program (HMDP) at Arizona State University is an early outreach initiative designed to increase the number of first-generation Arizona learners who are prepared to enroll at ASU through direct family involvement. Open to all, the program reflects ASU's commitment to inclusivity by supporting learners and their families from 8th grade through high school graduation with monthly workshops and mentorship. As the program approaches its 40th anniversary in 2024, it continues to build a community of support and shared experiences, inspiring learners like Stephanie Padilla, an ASU alum and Senior Director at Intel, who credits HMDP for helping her navigate her educational journey.



The 2024 ASU GEAR UP Summer Institute gave me a real and fantastic pre-college experience. After attending, I knew I wanted to enroll at Arizona State University.

—**ASU GEAR UP**  
Summer Institute participant



# Ask A Biologist

 askabiologist.asu.edu



Ask A Biologist is a biology-focused educational program and website that inspires interest and provides reliable and engaging learning resources — including stories, lessons, games, virtual reality tours, podcast interviews and more — for learners of all ages, across the globe. Ask A Biologist offers trustworthy learning experiences that inspire learners to ask questions and learn more about the living world around them.

**7 million**

young learners  
under 25 years old

**530,000**

learners 25 years  
and older



**7 million +**

game plays

**2 million**

virtual 360 tours

**271,000**

video views (the  
equivalent of over  
5,100 hours or 212  
days)

**34.1 million**

website visits

“

I help homeschool some of my family and have spent hours and entire days searching for the information I found here. I have NEVER seen a site that has such detailed information that is free. I'm not even sure I've seen this much information available in one place. The diagrams are brilliantly informative, give clear details and can be used by multiple ages/grades. The people who put this together deserve a raise and cookies.

— **Belinda,**  
Teacher

“

I just discovered this site and since I'm a 77-year-old science geek, I love it. My high school experience in chemistry and physics started my interest in science though I became a social worker. I will give suggestions if they come to me, but just know there are many interested in science among older people, especially women who had no encouragement to pursue college, let alone scientific careers. Bravo ASU.

— **Sharon,**  
Lifelong learner



# ASU Preparatory Academy

 [asuprep.asu.edu](http://asuprep.asu.edu)



ASU Preparatory Academy continues to reimagine possibilities for K–12 learners in Arizona and beyond, designing digitally supported learning environments on the premise that everyone can learn, given the right support. ASU Prep remains intently focused on learners as opposed to structure. Thus, we created a nimble, rapidly deployable learning platform built with these learners in mind.

ASU Prep is deeply integrated with the university's ecosystem of learning assets, setting it apart from any other K–12 learning model. More than 200 pathways across disciplines offer direct access to university faculty and major-level courses, enabling learners to deepen and clarify career interests. By eliminating boundaries between high school and university, ASU Prep is pulling down silos that determine advancement by age or grade level versus learning readiness. Throughout their K–12 experience, learners become part of a college-going and college-attending community, thus providing familiarity, confidence and an affordable pathway to pursue a college degree.

**7,280**

**learners were served** in the academy's network of Arizona-based schools and through ASU Prep Digital.

**17,000+**

**learners with more than 61K** enrollments served in partnership with 350+ national and international partners.

**160**

**active AZ partnerships provide support** for curricular or instructional gaps, accelerated learning paths and increased flexible choices for learners.

ASU Prep launched ASU Prep Global, our national partnership arm, offering courseware, professional development, school design consulting, university courses and direct K–12 instruction through the Global Academy.

Created the Transformational Teacher Leadership program and Expert Teacher Track to build collaboration and continued learning in optimal teaching methodologies.

“

Success in the classroom starts by giving your educators the tools and information they need. ASU Prep Global helped us achieve that and we've seen the positive impact it's had in real time.

— **Patrick, Principal**  
Judge Memorial Catholic High School, Utah

“

Since adding ASU Prep Global as a close partner, I've seen kids take control of their education and advocate for themselves. They're developing a broader skill set that wouldn't have been possible without our global academy.

— **Cory, Superintendent of Schools**  
Northern Cass School District, North Dakota





# ASU Prep professional development

 [asuprepdigital.org/professional-development](https://asuprepdigital.org/professional-development)

ASU Prep provides a customizable suite of professional development services that respond to the unique needs of teachers. Offerings span crucial areas, from AI integration and personalized learning to teacher resilience and wellness. ASU Prep fosters collaboration among teachers across districts, not just within individual schools, facilitating a rich exchange of ideas and practices and amplifying the impact of ASU Prep's expertise.

Whether conducted online or in-person, the design of ASU Prep's training sessions equips teachers to thrive in both virtual and blended learning environments. The program is not just flexible; it serves as a catalyst for enhancing educational outcomes through robust professional development.

## Key highlights



**21K** teachers



**1,560** schools

- ▶ 21,000 Arizona teachers trained across 1,560 schools in 472 districts via ASU Prep Digital's Arizona Virtual Teaching Institute.
- ▶ ASU Prep has trained over **43,000 teachers** worldwide.

▶ Began partnerships with Cedar Hills Elementary School in the Hackberry School District and teachers from the Litchfield Elementary School District to provide professional development on the Science of Reading.

▶ Established a new partnership with the LESD Online Academy in the Littleton Elementary School District to provide a professional development series aimed at supporting virtual teachers in fostering learner motivation and engagement.



I appreciated the chance to talk in breakout rooms and explore the resources, then come back to share what I found helpful. The instructor was very well prepared and provided encouragement for all of us to engage.

— **Amanda C.**  
Paradise Valley School District



I like the scenarios that were presented for the breakout groups. It made me reflect on what I do in my classroom and what I could do differently to increase engagement and understanding.

— **Erik S.**  
Humboldt Unified School District





# ASU Professional Educator Learning Hub

 [educatorhub.asu.edu](https://educatorhub.asu.edu)

The ASU Professional Educator Learning Hub (PELH) transforms professional learning for PreK–12 educators, offering modern, flexible and useful resources that address the evolving needs of the education workforce.

Educators across the nation have shared frustrations with traditional professional development that prioritizes compliance over meaningful growth. PELH addresses these challenges by focusing on:

1. **Accessible pathways** for specialization and career advancement.
2. **Practical skills** to deliver personalized learning that meets learners' needs.
3. **Leadership development** to build supportive, high-performing teams.

With over 100 learning experiences at its launch in 2024, PELH offers:

- ▶ 52 facilitated courses, 52 micro-credentials and 85 self-paced courses.
- ▶ Topics like Refugee Education, generative AI in teaching and culturally responsive pedagogy.
- ▶ Specializations such as the Computer Science Endorsement and Learning with AI, many credit-eligible toward ASU's Master of Arts in Education.

PELH partners with schools and districts to design tailored subscription packages addressing local needs — whether enhancing online learning skills or supporting multilingual learners.



# Dreamscape Learn K-12

 [dreamscapelearn.asu.edu](https://dreamscapelearn.asu.edu)



Dreamscape Learn redefines the learning experience, using immersive technology to inspire learners as active scientists, explorers and creators. Through this initiative, learners participate in virtual, hands-on adventures that bring academic concepts to life, allowing them to engage deeply with subjects like biology, chemistry and art history in ways that traditional classrooms can't replicate.

Dreamscape Learn (DSL) is a pioneering partnership between Dreamscape Immersive and Arizona State University (ASU). By merging advanced curricula with cinematic storytelling, DSL creates powerful learning environments that make complex topics more accessible, engaging and relevant for today's learners.

By positioning learners as the protagonists within immersive learning experiences, DSL places learners at the center of the story, engaging them in exciting and meaningful ways. ASU faculty experts collaborate with industry leaders to create immersive modules, blending theoretical knowledge with practical applications. Through avatar-driven experiences, learners work together to explore virtual worlds, solve problems and enhance their understanding of complex topics.

“

Thank you so much for everything you poured into our Kyrene Middle School visit to ASU. We had such an amazing trip. Our kids came back so energized by what they saw and experienced. We love seeing them picture themselves in future experiences, like overhearing “when I go to ASU...” We’re looking forward to future trips. Please pass our gratitude along to everyone who was involved.

— Educators at Kyrene Middle School

“

Thank you, thank you, thank you. The field trip was a huge success and I have you to thank for it. I appreciate your working with us and this large group of 450 students! Thank you for your communication, organization and help with finding additional activities. I know that your work is expansive and you need more support, so I am especially grateful that you were able to make this work for us this year.

— Middle school educator



# Edson Entrepreneurship + Innovation Youth Entrepreneurship Program

 [entrepreneurship.asu.edu/programs/youth-entrepreneurship](https://entrepreneurship.asu.edu/programs/youth-entrepreneurship)



The Edson Entrepreneurship + Innovation Institute at ASU stands at the forefront of melding educational innovation with entrepreneurship. Guided by a specialized team, the institute focuses on cultivating an inclusive entrepreneurial culture, advancing skill development and providing equitable access to resources. E+I's Youth Entrepreneurship program is joining forces with top-tier partners to power collaborative initiatives including:

## Middle-school STEM program

A national initiative transforming schools into tech innovation hubs with cutting-edge curriculum and resources.

## K-12 platform

An open-access online portal stocked with the latest AR and VR educational materials, as well as professional development resources for educators.

## Immersive learning powered by 5G

Preparing schools for the future of connectivity needs for immersive learning at scale.

## ASU K-12 ecosystem

Sparkling Synergy meetings use working groups identify opportunities for collaboration and ideate solutions for K-12 programs.

E+I's blend of entrepreneurship and educational innovation will continue to create a ripple effect across communities and generations.

The J. Orin Edson Entrepreneurship + Innovation Institute's Youth Entrepreneurship team leads the **Verizon Innovative Learning Lab** program, introducing cutting-edge technologies to schools and developing curriculum centered around sustainability, entrepreneurial mindset and design thinking. The Verizon Innovative Learning Lab empowers learners to take the lead by facilitating problem-solving sessions where they apply what they've learned to real-world challenges. This hands-on approach deepens understanding and cultivates essential leadership and critical-thinking skills.

## Key highlights

Our nationwide initiatives have reached:



**300K**  
learners



**1,000**  
educators



**500**  
schools





 me3.careers



The me3 interactive quiz helps learners consider their future education and career options. Using me3, learners can explore different majors and careers that fit their interests and passions, making them better prepared to select a degree program.

### Key highlights



# 18,799

learners registered me3 accounts during FY 2024



Something I really loved about me3 was how simple it was to take. It's not complicated at all. I'm a visual learner, so the pictures really made it so much better than reading a description of the career while picking through them. Another thing I liked was that it took my interest and matched it to a list of careers and me3 gave me a list of majors that would help me be on the right path to the career.

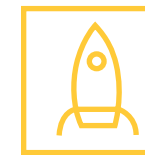
— **Laurina**  
High school student



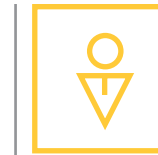


ASU's Mary Lou Fulton Teachers College's Next Education Workforce initiative works with schools across the United States to design and implement staffing models that center learners and build educator teams around their needs. Nearly **100 schools across 34 systems in 13 states** have already adopted this team-based approach to school staffing, impacting approximately **25,000 K-12 learners** in 2023-24. ASU and its school partners are leaders in a national effort to redesign the teaching profession and how talent is organized within schools. Results show that team-based strategic school staffing is associated with improved academic outcomes for learners, as well as increased job satisfaction and reduced turnover for teachers.

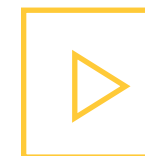
### Key highlights



Built new strategic partnerships — including AASA, the National School Superintendents Association, state agencies, regional intermediaries and teachers unions — to deepen implementation in key states.



Hosted **633 educators** and visitors for formal site visits in Arizona, offering firsthand ways to experience team-based school staffing in action.



Recorded more than **400 educators**, learners, school and system leaders to create virtual, video-based site visits that are improving access and lowering barriers to exploring team-based models.



Launched the Community Educator Learning Hub to more than **7,500 users**; this new award-winning learning platform offers **nearly 200 15-minute nanocourses** that simplify teaching and learning competencies into practical tips and strategies for tutors, parents and other members of school communities.



As a single-classroom teacher, you will work endlessly, and teachers want to be everything for everyone, and they will do anything in their power to do everything for their students. With the team, I could do more for my students than I could ever do alone.

— Arizona educator on a kindergarten team

So far, we are thrilled with the partnership. It's creating a situation where we don't have to start from scratch, and is bringing credibility to our work.

— Colorado school district leader

I am more confident in how I approach my teaching style with students because I know it is OK to be flexible and tailor my activities to each student's needs.

— Community Educator Learning Hub enrollee

FY24 data unless otherwise noted

## Mary Lou Fulton Teachers College's

# Next Education Workforce

 [workforce.education.asu.edu](https://workforce.education.asu.edu)



# 02

## Universal Pathways

Every learner deserves a clear path to college. But, that path is often obstructed by high costs and restrictive admissions policies. The college journey should be easier and more accessible for all. ASU's Universal Pathways provide flexible, affordable options that serve as a bridge to college for aspiring learners and meet learners wherever they are in their educational journey.

**ASU Universal Learner Courses (ULCs)** allow learners to start college coursework at their own pace, without financial risk or GPA pressure. With ULCs, learners can explore new subjects, earn college credits and decide whether to apply those credits toward an ASU degree or another institution. **ASU Earned Admission** offers a path to an ASU degree by allowing learners to earn college credits and secure admission with a qualifying GPA. **Accelerate ASU** integrates college-level courses into high school curricula, fostering early access to higher education and providing high school learners with a head start toward their degrees. Through these innovative pathways, ASU unlocks college access for all, helping learners confidently navigate their journey to higher education and beyond.

### In this section

- ▶ **Accelerate ASU**
- ▶ **Earned Admission**
- ▶ **Universal Learner Courses**



# Accelerate ASU

 [accelerate.asu.edu](https://accelerate.asu.edu)



Learners who complete college courses in high school are significantly more likely to pursue higher education. That's why Accelerate ASU was created — to provide an innovative and flexible way for high school learners to earn college credits and prepare for academic success. Through partnerships with 250 high schools nationwide, Accelerate ASU enables learners to take college-level courses designed by ASU faculty, aligned with ASU degree programs and widely transferable.

In FY24, Accelerate ASU experienced exceptional growth, expanding access to higher education for underrepresented learner populations. The program grew by 60% in high school learner enrollment and added 130 new active high school partners, marking a 20% year-over-year increase in partnerships. These partnerships include collaborations with International Baccalaureate (IB) schools and organizations like College Track, which support first-generation and low-income learners.

The program continues to provide flexible payment options tailored to schools' and families' needs, whether paying after course completion or up front. Accelerate ASU is building seamless pathways from high school to higher education and economic opportunity, ensuring that every learner has the chance to succeed.

## Key highlights



**8,003**

high school learners  
in FY24



**12,086**

high school course  
enrollments in FY24



**250**

high school partners



Accelerate ASU is playing a huge role in helping me earn a college degree while being dually enrolled in high school. Registration is easy and the courses are state-of-the-art and inspiring. It's an amazing opportunity to earn college credits from a top-name university at a greatly reduced cost.

— **Cayla R.**,  
High school learner



# ASU Earned Admission

ea.asu.edu



College is now within reach for everyone through ASU's Earned Admission—a flexible, low-risk pathway to a college degree. ASU sees beyond academic records, believing in the promise and potential of a learner's future. Through Earned Admission, learners take online courses from leading ASU faculty to earn college credits. Aspiring students experience college-level coursework and only pay for credit when they're happy with their **final grade of C or better**. After finishing the coursework with a **minimum GPA of 2.75**, they earn a spot at ASU or the ability to transfer earned credits toward a degree at another institution.

## Key highlights



# 12,760

Earned Admission learners enrolled in 26,672 credit-eligible courses on their pathway to a degree in FY24



# 6,380

Learners admitted to ASU degree programs through ASU's Earned Admission (all-time)



I am a mom of two toddlers (a four year old and two year old when I began my journey), a full-time employee and a small business owner. I initially planned to transfer to ASU after my Associates Degree at community college, but my low GPA made it difficult. To start with ASU sooner, I chose Earned Admission. Now, I've graduated from ASU Summa Cum Laude in Tourism and Recreation Management. Without Earned Admission, I might still be struggling to improve my GPA.

— **Genevieve Martin Del Campo**,  
Earned Admission Learner and  
ASU Alumni





# ASU Universal Learner Courses

 ulc.asu.edu



ASU Universal Learner Courses (ULCs) open up college access to learners of all backgrounds, providing an affordable, flexible and low-risk way to earn college credits. ULCs were created to remove common barriers to higher education, such as high costs and GPA concerns, allowing learners to explore new fields, build knowledge and gain valuable college credits. With no application required and affordable pay-as-you-go pricing, ULCs make it possible for learners to start college coursework at their own pace, with the option to add credits to their transcript only when they're ready. This innovative model helps learners begin or return to their educational journeys with confidence.

ULCs are designed and taught by ASU's leading faculty and credits are widely transferable, giving learners the flexibility to apply their learning toward a degree at ASU or other institutions. Whether a learner is seeking college credits in high school, supplementing their existing degree path or testing out college courses for the first time, ULCs offer a clear and accessible pathway to a brighter future.

## Key highlights



# 25,842

learners served with ULCs in FY24



# 64,286

ULC enrollments in FY24



It's a really great opportunity to not only work on your educational goals, but to do it while simultaneously building your career — no matter what it is — because of the flexibility of the program.

— **Nigel Sanchez,**  
ASU learner



# 03



## Career and professional development

Accelerating technological change is rapidly decreasing the shelf life of job skills and disrupting a wide range of economic sectors. ASU's mission is to help build a robust workforce through education to ensure that workers in Arizona, the United States and all over the globe are equipped with the skills to thrive in our changing economy — and to guarantee that organizations in the private, public and nonprofit sectors have access to the talent they need to prosper.

New offerings have also been developed in Spanish, breaking a language barrier to effectively serve learners in different regions worldwide.

### In this section

- ▶ **ASU CareerCatalyst**
  - ▶ Artificial intelligence
  - ▶ Healthcare
  - ▶ Microelectronics
  - ▶ Leadership and management
  - ▶ Professional Skills for Everyone
  - ▶ Technical skills
  - ▶ Sustainability
- ▶ **Supporting Impact Arizona**
- ▶ **AZNext Workforce Training Development Accelerator**
- ▶ **Employer partnerships**
  - ▶ adidas
  - ▶ Starbucks
  - ▶ Uber
  - ▶ Hines
- ▶ **Executive development**
  - ▶ Bob Ramsey Executive Education
  - ▶ The College of Global Futures Executive Education
  - ▶ ASU Lodestar Center for Philanthropy and Nonprofit Innovation
  - ▶ Thunderbird Executive Education
  - ▶ W. P. Carey Executive Education



# ASU CareerCatalyst

 [careercatalyst.asu.edu](https://careercatalyst.asu.edu)



ASU's CareerCatalyst upskills learners through a range of ready-to-learn offerings and partners with organizations on tailored talent-transforming education programs. Powered by the #1 ranked university for innovation, a holistic range of learning experiences combine vital professional and technical skills, supporting learners from entry to executive level. Tapping ASU's wealth of knowledge — from the expertise of ASU faculty and researchers to industry connections — CareerCatalyst aims to spark workforce development and economic growth.

CareerCatalyst puts learners at the center of practical learning experiences. The portfolio of offerings aligns courses and certificates with emerging and high-growth industries, addressing skills gaps and labor shortages. For the most competitive job markets and roles, technical skills are evolving rapidly while professional skills such as communication and problem-solving are always in demand. CareerCatalyst learning experiences cultivate well-rounded talent in flourishing industries like sustainability, artificial intelligence, microelectronics and the bioeconomy, imparting a powerful blend of skills needed to thrive across careers.

## Key highlights



**198,154**

total learners in FY24



**567,454**

total enrollments in FY24

**160**

new course offerings developed in FY24

**545**

total CareerCatalyst courses available



# Artificial intelligence

 [learning.asu.edu/ai-learning/](https://learning.asu.edu/ai-learning/)



Artificial intelligence is driving a new era of transformation, reshaping industries and redefining how we work, learn and interact. At ASU, we're not just preparing for the future of AI — we're actively shaping it. Through a robust portfolio of AI programs, learners at every career stage can gain the skills necessary to stay ahead of this rapidly advancing field. Our offerings empower both individuals and organizations to navigate AI's complexities and leverage its potential for growth, innovation and operational efficiency.

## Offerings include::

- ▶ **AI Foundations**
  - ▶ Prompt Engineering
  - ▶ Scripting ChatGPT with Python
  - ▶ Generative AI for the Workplace
- ▶ **AI in Finance**
  - ▶ Generative AI for Finance Professionals
  - ▶ AI for Leaders in Finance and Banking
  - ▶ AI for Banking Analysts
- ▶ **AI in Business and Leadership**
  - ▶ AI for Marketing Professionals
  - ▶ AI for Data Analytics Professionals
  - ▶ AI Strategy and Leadership
  - ▶ AI and Analytics Leadership
  - ▶ AI and Learning Analytics for Talent Development
  - ▶ W. P. Carey Certificate in AI in Business
- ▶ **AI in Healthcare**
  - ▶ Generative AI for Healthcare Professionals
  - ▶ AI for Leaders in Healthcare
- ▶ **AI in Education and the Public Sector**
  - ▶ AI in the Public Sector
  - ▶ AI for Teaching and Learning: K–8
  - ▶ AI for Teaching and Learning: Higher Education
- ▶ **AI in Sustainability**
  - ▶ AI in Sustainability

## AI Foundations and generative AI courses

ASU's AI Foundations courses demystify the core concepts of AI, offering learners the knowledge they need to stay competitive in an AI-driven economy. Courses like Prompt Engineering and Generative AI for the Workplace teach practical skills that enable learners to create effective prompts for AI models, automate workflows and streamline operations using AI tools such as ChatGPT.

## Industry-specific and leadership programs

ASU also offers AI programs tailored for specific sectors and leadership roles. Courses like AI for Business and Leadership provide executives with the tools to integrate AI into business operations. Industry-focused programs, including Generative AI for Healthcare Professionals and AI for Sustainability, help professionals apply AI to solve unique challenges in their fields.



# Healthcare

 [careercatalyst.asu.edu/programs/?query=Health](https://careercatalyst.asu.edu/programs/?query=Health)



ASU has established itself as a pivotal force in the healthcare industry with the development of its expansive ASU Health initiative. A cornerstone of this initiative is its focus on equipping the healthcare workforce with the necessary skills to enhance public health across Arizona. CareerCatalyst alone offers more than 20 specialized non-degree job training programs, preparing professionals in vital sectors like nursing, community health and health innovation.

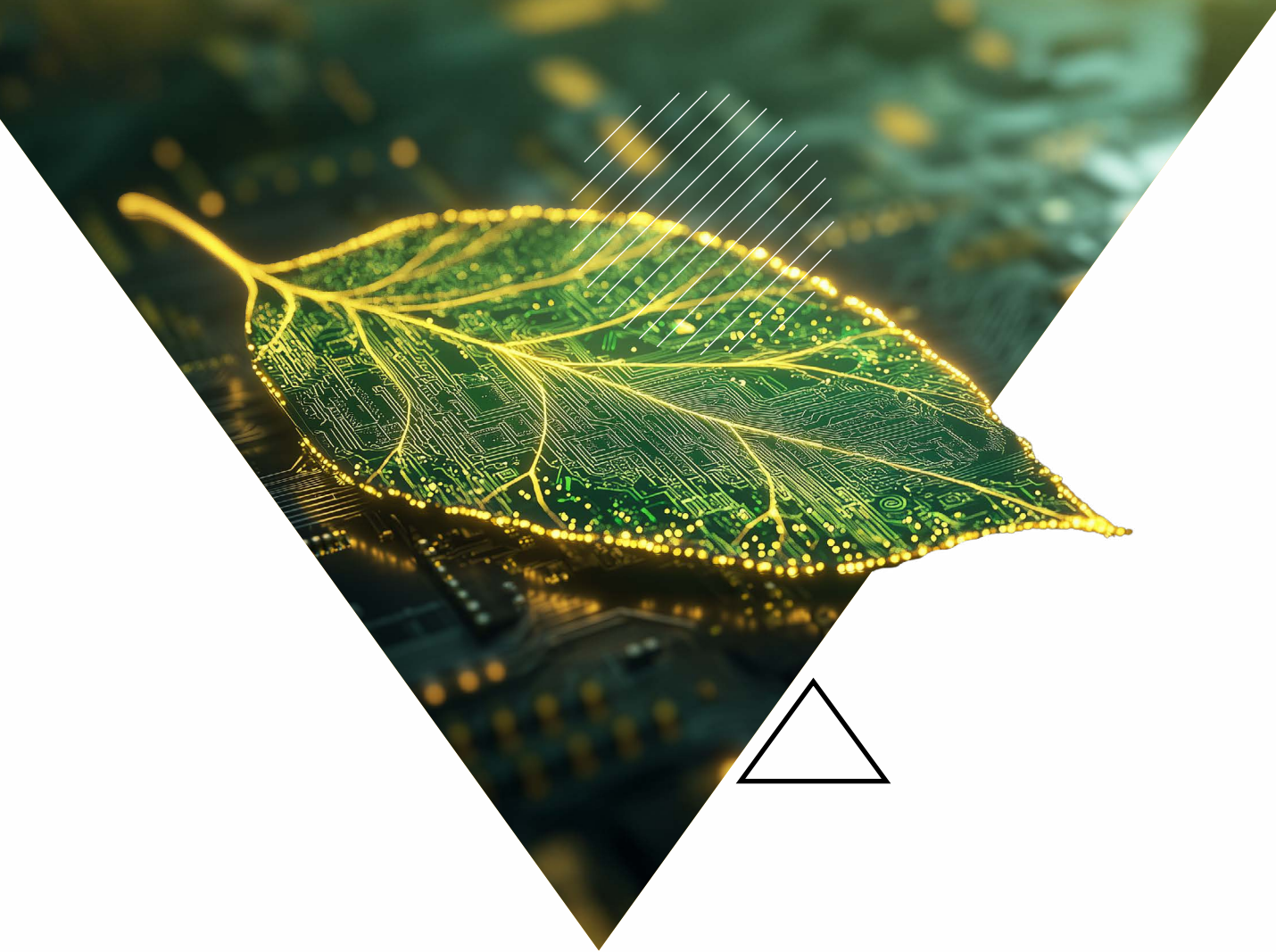
One example is a dynamic partnership between ASU and Mayo Clinic, which transforms the in-person onboarding for scheduling staff into an immersive digital experience. The training provides an introduction to Mayo Clinic values, as well as the technical and soft skills required for positive, empathetic and engaging interactions with patients.

Moving forward, ASU will expand its offerings, constructing a comprehensive suite of programs that address critical career skills and job training in high-demand areas. These new programs will draw upon ASU's renowned expertise in fields such as health care robotics, precision medicine and biomedical research, further solidifying the university's role in transforming healthcare education and training.

## Key Offerings include:

- ▶ Academy of Lactation Programs: Health Science Bundle
- ▶ Advanced Certificate in Nurse Precepting
- ▶ Anatomy and Physiology I and II
- ▶ ASU and Mayo Clinic Health and Well-being Certificate
- ▶ Community Health Worker Training Program
- ▶ Dentistry and the SBIRT Model: Helping with Substance Abuse Issues
- ▶ English for Healthcare
- ▶ Foundations of Clinical Research Management
- ▶ Global Health Management Exec Cert
- ▶ Health Innovation Leadership Exec Cert
- ▶ Healthcare Research
- ▶ Human Data Visualization
- ▶ Human Systems and Biological Signals
- ▶ Human Trafficking Awareness in Healthcare
- ▶ Improving Health Outcomes for Pediatric Feeding Disorder
- ▶ Interprofessional Practice in Primary Care
- ▶ Introduction to Adult ICU Nursing and Medical Ventilation
- ▶ Introduction to Remote Human-Centric Data Collection and Processing
- ▶ Lactation Education Program
- ▶ Screening, Brief Intervention and Referral to Treatment for Risky Substance Use
- ▶ Transforming and Innovating Global Health
- ▶ Wastewater and Public Health





In the wake of the CHIPS Act's historic \$50B+ investment in revitalizing American semiconductor manufacturing, the microelectronics workforce is positioned to grow by hundreds of thousands of jobs, with 20,000 jobs already announced in AZ and more anticipated. In Arizona, industry leaders Intel and TSMC alone shared with ASU that they will demand 20,000+ engineers and 5,000+ technicians by 2030, creating a significant need for a skilled workforce. ASU now works with these global industry leaders to design the future of microelectronics education.

To address the critical gaps in microelectronics education and training, ASU is developing a range of workforce training programs to position ASU as a leader across the talent pipeline. This work comprises targeted programs aimed at inspiring, training and upskilling a world-class microelectronics workforce. ASU's microelectronics activity is supported by over \$150M in investment secured by over 150 faculty at the forefront of materials and manufacturing research.

One example of ASU's broad and growing microelectronics-related learner offerings is the Microelectronics Specializations Portfolio. This portfolio of offerings provides learners with the technical skills needed to excel in this rapidly-growing field, with programs developed by experts from the ASU Fulton Schools of Engineering, W. P. Carey School of Business and other ASU schools and colleges.

The portfolio consists of nine specializations, or groups of courses, covering a spectrum of in-demand skills that prepare individuals looking to transition into the industry or upskill within it.

# Microelectronics

 [careercatalyst.asu.edu/employers/microelectronics](https://careercatalyst.asu.edu/employers/microelectronics)

**Arizona is poised to be at the epicenter of the American microelectronics revolution** — and ASU is committed to ensuring the industry's success in our state. Working closely with leading microelectronics firms and leveraging Arizona's investment in the industry, ASU is mobilizing the research, expertise, infrastructure and human capital necessary for the microelectronics industry to thrive in Arizona and the United States.



**30+** learning offerings to prepare the microelectronics workforce, including key programs such as:

- ▶ Additive Manufacturing — Microelectronics
- ▶ Materials Science for Advanced Technological Applications — Microelectronics
- ▶ Materials Science for Technological Applications — Microelectronics
- ▶ Rapid Prototyping Using 3D Printing
- ▶ Battery Technologies — Microelectronics
- ▶ Designing Antifragile Microelectronics Supply Chains
- ▶ Rapid Prototyping and Tooling Specializations — Microelectronics
- ▶ Semiconductor Packaging — Microelectronics





# Leadership and management

ASU CareerCatalyst's leadership and management programs empower organizations by cultivating leadership excellence across roles. With only 5% of companies offering leadership training at all levels, ASU is bridging this gap. These programs enable individuals to develop the critical skills needed to drive innovation, accountability and collaboration.

## Offerings include::

- ▶ **Emotional Intelligence and Leadership Development:** Cultivates skills for applying emotional intelligence as a core component of effective leadership.
- ▶ **Modern Leadership:** Explores the distinctions between leadership and management and introduces adaptive strategies along the leadership continuum.
- ▶ **Principles of Character-Driven Leadership:** Emphasizes values and ethics as the foundational elements of leadership.
- ▶ **Digital Inclusion Leadership Certificate:** Investigates the digital divide and offers strategies for fostering equitable access across communities.

Through this portfolio, ASU equips professionals to navigate complex organizational challenges and foster sustainable growth.

FY24 data unless otherwise noted



# Professional Skills for Everyone

 [careercatalyst.asu.edu/employers/professional-skills](https://careercatalyst.asu.edu/employers/professional-skills)

In a rapidly-changing economy, professional skills, like communication, emotional intelligence and teamwork, are critical for success in the workplace. Many professionals haven't had the opportunity to learn them in an educational setting — until now. ASU CareerCatalyst's Professional Skills for Everyone, an innovative new series of courses that aims to open access to soft skills education for working learners.

The portfolio contains **28 courses**, with specializations including:

- ▶ **Communication**
- ▶ **Conflict and Negotiation**
- ▶ **Decision Making**
- ▶ **Digital Intelligence**
- ▶ **Emotional Intelligence**
- ▶ **Feedback and Coaching**
- ▶ **Resilience**
- ▶ **Strategic Thinking**

FY24 data unless otherwise noted







# Technical skills

ASU CareerCatalyst's technical skills programs prepare professionals to thrive in a landscape where technical skills are evolving at an unprecedented pace. Covering high-demand areas like data analytics, coding and cybersecurity, these offerings ensure learners stay up-to-date with the latest tools and techniques. With a range of over thirty programs, individuals progress from foundational to advanced skills, supporting immediate application and long-term career growth.

## Offerings include:

- ▶ **Python for Business Analytics:** Master Python fundamentals and data structures for business insights.
- ▶ **Programming Languages:** Expand coding expertise for tailored applications.
- ▶ **Project Management:** Learn methodologies and tools for managing project lifecycles.
- ▶ **Data Structures and Algorithms:** Develop skills in efficient data management and problem-solving.
- ▶ **Intro to Software Engineering:** Explore software life cycle models and development best practices.



FY24 data unless otherwise noted





# Sustainability



[careercatalyst.asu.edu/employers/sustainability-and-esg](https://careercatalyst.asu.edu/employers/sustainability-and-esg)

ASU consistently ranks “No. 1 in the U.S.” for sustainability by the Sustainability Tracking, Assessment and Rating System. Sustainability is a core to the ethos of ASU, manifesting across all units and partnerships to evolve education, discovery and practices that empower individuals to create a sustainable world.

Aligning with this principle, ASU believes that education is the crucible for forging a sustainable future and economy. ASU’s program offerings are developed by ASU’s foremost authorities on sustainability – in collaboration with industry experts – to equip the workforce with the skills required to confront global sustainability issues.

Through unique offerings like the “Grow with Google Sustainability Analyst” program and the comprehensive “Principles of ESG and Sustainability” courses, CareerCatalyst ensures that professionals are provided with the essential understanding and abilities to promote sustainability within various sectors. Moreover, the Sustainability Teachers’ Academy is committed to preparing K-12 teachers to weave sustainability into their teaching, thereby nurturing a future cadre of leaders in sustainability.

## Course offerings include:

- ▶ Sustainable Earth
- ▶ Careers in Sustainability
- ▶ Cars in Cities: Challenges and Alternatives
- ▶ Data Strategies for Smarter Cities and Resilient Communities
- ▶ ESG Accounting Concepts for Organizations
- ▶ ESG Assessment and Reporting
- ▶ Foundational Sustainability Skills and Competencies
- ▶ Foundations of GHG Accounting for Organizations
- ▶ Foundations of Sustainability
- ▶ Foundations of Sustainability and ESG for Organizations
- ▶ Fundamentals of Circular Economy
- ▶ Fundamentals of ESG Reporting
- ▶ Fundamentals of Greenhouse Gas Accounting
- ▶ Fundamentals of GRI Reporting
- ▶ Fundamentals of Organizational Sustainability
- ▶ Fundamentals of Sustainable Supply Chains
- ▶ How Sustainability and ESG is Changing Organizations and Financial Markets
- ▶ Introduction to International Water Law
- ▶ Microbiology-based Technologies for Water and Wastewater Sustainability
- ▶ Physical Geography: from Weather to Rocks
- ▶ Wastewater and Public Health

## Key sustainability programs

### Principles of ESG and Sustainability

This eight-course program equips learners with key concepts in ESG and sustainability, covering reporting tools, supply chain management, sustainable materials and GHG accounting. It culminates in mastering ESG assessment and reporting for organizational leadership.

### Sustainability Analyst Fundamentals

A three-course specialization, this program trains learners for roles such as sustainability analyst, teaching essential tools, data analysis and sustainability planning to shape organizational practices.



### Grow with Google: Sustainability Analyst

Working in partnership with Google and designed by experts at ASU’s College of Global Futures, the Grow with Google Sustainability Analyst program helps learners assess sustainability challenges that face the planet and employers while equipping learners with skills to address these challenges.





# Supporting Impact Arizona

 [neweconomy.asu.edu](http://neweconomy.asu.edu)



Rapid technological change is disrupting a wide range of economic sectors and creating new opportunities for Arizona to grow as a high-tech leader. ASU's charge from the state of Arizona is to help build a robust workforce equipped with the skills to drive growth industries — and to guarantee that Arizona's businesses have access to the talent they need to prosper.

Impact Arizona is advancing multiple programs and opportunities to meet the needs of employers and workers alike through rapid upskilling and reskilling in high-demand fields. These programs will help to ensure that Arizona citizens — as well as the U.S. and global workforce — have the skills they need to land good-paying jobs and that businesses have the skilled workforce they need to thrive in a diversified, high-tech economy.

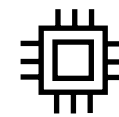
## Key highlights



**87,059**  
course enrollments  
in FY24



**29,227**  
learners served  
in FY24



### Science and technology centers

Powering industries of the future through research, development and innovation.



### Education

Working with leading enterprises to connect education and innovation with market needs.



### Workforce development

Producing skilled workers through top-tier education and training programs for in-demand careers.



### Industry partnerships

Partnering with industry leaders like Intel and TSMC to strengthen Arizona's economic competitiveness.

### Courses and programs launched in FY24

- Science and engineering** (23 courses)
- Teaching and learning** (13 courses)
- Sustainability** (12 courses)
- Health** (6 courses)
- Global launch** (5 courses)
- Design and the arts** (4 courses)
- History / global topics** (4 courses)
- Business** (15 courses)
- Journalism / communication** (4 courses)
- Public service** (5 courses)
- AI training portfolio** (10 programs)
- Career upskilling** (51 programs)
- Southwest Sustainability Innovation Engine (SWSIE) Workforce Challenge** (2 courses)
- Water Innovation Workforce Development** (4 courses, 1 certificate)
- Workforce Training Catalog for the Microelectronics Industry**
- AZ Small Business Workforce Education Program** for the microelectronics industry
- InStride** (150 courses added to the platform)



# AZNext Workforce Training Accelerator

 [wpcarey.asu.edu/aznext](http://wpcarey.asu.edu/aznext)



The AZNext program integrates key knowledge and content developed by ASU faculty from Schools such as W. P. Carey School of Business, the Ira A. Fulton Schools of Engineering and the New College of Interdisciplinary Arts and Sciences. Focused on workforce development in booming sectors like IT, cybersecurity and advanced manufacturing, AZNext forges partnerships with employers, workforce agencies and industry groups. Its model, designed for scalability, prioritizes inclusive education and offers industry-recognized certification courses at no cost, particularly benefiting underrepresented communities such as women, minorities and veterans. This holistic approach aims to equip participants with market-relevant skills, enhancing their career prospects.

## Key highlights



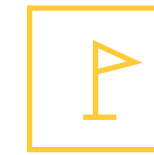
**28**

workforce training and apprenticeship programs launched to date



**3,422**

participants enrolled



**62**

training cohorts completed



The beautiful thing about AZNext's program is that it helps give veterans the foundations that they need in order to understand what they need to succeed in business.

— **Jeff Black**  
Business Readiness for Veteran's participant



I brought on somebody internally as a senior analyst developer maybe six months before AZNext started on this project. He had six months of time to get familiar with the data and start doing some simple coding. And I would tell you it's probably taken the AZNext participant half the time to get up to speed.

— **Traci Graham**  
VP Finance and Analytics - Daseke Inc.



# Employer partnerships

In FY24, ASU's Learning Enterprise partnered with top employers — including Deloitte, General Motors and Starbucks — to deliver cutting-edge programming and provide transformative education to their workforces.

CareerCatalyst solutions extend beyond traditional learning methods. Our partner services include a spectrum of learning assets, from ready-to-learn courses to fully bespoke programs designed to align with an organization's strategy and goals. By choosing to partner with ASU, organizations gain a competitive edge and talent gains insights and knowledge directly from world-class experts who are spearheading innovation in their fields. CareerCatalyst delivers talent-transforming learning experiences to your workforce that align seamlessly with your company's long-term objectives and foster a culture of continual growth and excellence.

The following pages highlight examples of CareerCatalyst's work with partners such as Starbucks, Uber and adidas, showcasing how ASU helps organizations foster continual growth and excellence through talent-transforming educational experiences.

**To learn more about building a CareerCatalyst workforce education program for your company or organization,**

scan the QR code here



 [careercatalyst.asu.edu/employers](https://careercatalyst.asu.edu/employers)





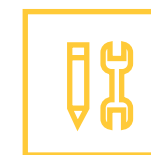


 [adidas.asu.edu](https://adidas.asu.edu)

Made available to adidas's global sales force, the Digital Business Course builds a deep understanding of the digital partner commerce business, as well as customer motivators and the customer journey. The course strengthens the company culture and network by facilitating enriching discussions, sharing best practices and breaking down silos across functions, regions and levels.

### Key highlights

The adidas and ASU partnership garnered **three first-place Excellence Awards from the Brandon Hall Group**, which recognizes human capital management programs, strategies and tools that have achieved positive measurable results:



Best Advancement in Competencies and Skill Development.



Best Unique or Innovative Learning and Development Program.



Best Unique or Innovative Sales Training Program.

To learn more about building a CareerCatalyst workforce education program for your company or organization, scan the QR code here





# Starbucks Global Academy

 [starbucksglobalacademy.com](https://starbucksglobalacademy.com)



Starbucks Global Academy is designed for Starbucks partners, customers and community members around the world to build expertise, broaden their knowledge and be part of positive change. SGA provides curriculum organized by Starbucks' areas of passion and expertise, in partnership with Arizona State University. Courses on SGA focus on the topics Starbucks knows best, based on 50+ years of experience and in collaboration with subject matter experts at ASU: cultivating a deep love for coffee, doing good for our planet and for our communities, creating a welcoming and inclusive "third place" and promoting personal and professional growth. All content on SGA is available on any device, at any time, in any location, at no cost.

## Key highlights



**64,226**

unique learners served  
in FY24



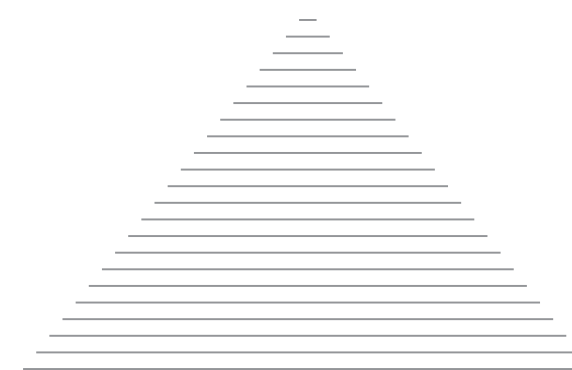
**257,237**

course enrollments in  
FY24



**567,343+**

course completions  
to date







# Uber

 [uber.asu.edu](https://uber.asu.edu)

Uber and ASU believe higher education should never be out of reach to those who are reaching. Both organizations have partnered to help drivers or an eligible family member achieve their educational goals, in life and on the road, with 100% tuition coverage for undergraduate credits, courses in entrepreneurship and English language learning.

## Key highlights



# 22,000+

enrollments in CareerCatalyst programs to date

# Hines

 [careercatalyst.asu.edu/employers/sustainability-and-esg](https://careercatalyst.asu.edu/employers/sustainability-and-esg)

Hines is one of the largest privately held real estate firms in the world, with a global presence and extensive experience across all property types and investment-risk profiles. In collaboration with ASU's CareerCatalyst, Hines launched a comprehensive sustainability training program, including six weeks of live training for Hines ESG ambassadors featuring presentations, working sessions and application projects, as well as a company-wide "Carbon 101" course. Hines also enhanced its internal learning portal with on-demand ESG and sustainability resources, upskilling employees in their professional development and sustainability knowledge.

The initiative successfully trained **32 ambassadors** to lead ESG initiatives within Hines and developed a suite of education solutions ready for scalability and repetition across the employee base, encompassing more than **4,800 individuals**.



We were confident in partnering with ASU because of their strong reputation for ESG sustainability research and innovation. The quality of the professors and team that they brought to our partnership was excellent and together we built a training program to equip 32 Hines employees to serve as ambassadors of ESG to colleagues. I'm grateful to ASU for helping us upskill our people.

— **Peter Epping**  
Hines Global Head of ESG



# Executive development

 [careercatalyst.asu.edu/employers](https://careercatalyst.asu.edu/employers)

In an ever-changing global landscape, it's imperative to foster advanced skills in both executive leadership and frontier technologies. ASU answers this call with groundbreaking learning programs that cater to the unique needs of high-level professionals and industry pioneers. From empowering executives to leverage quantum innovations to equipping nonprofit leaders to accelerate social change, ASU has set new standards in professional and executive education.





# Bob Ramsey Executive Education

 ramseyexecutive.asu.edu



Utilizing the School of Public Affairs and Watts College of Public Service and Community Solutions as a foundation, Bob Ramsey Executive Education equips leaders to make a meaningful impact in their communities with dedication and principle.

## Key highlights



### Arizona Certified Public Manager® Program:

Nationally-accredited 9-month leadership development program for public sector managers; available in a classroom and online format.

**Graduated 108 learners in FY24.**



### Arizona Municipal Clerks Certifications:

A partnership with the Arizona Municipal Clerks Association, **44 participants** completed the 5-day Municipal Clerks Institute and **25 participants completed the 3-day** Municipal Clerks Academy in 2024.



### Mandela Washington Fellowship for Young African Leaders:

A U.S. Department of State program, the six-week Leadership in Public Management Institute at ASU provided **25 working professionals** from Africa insights into good governance through site visits, community service and cultural exchange and supported the development of Fellows' leadership skills through academic workshops, mentoring and networking with local leaders and collaboration with U.S. citizens.



### Young Southeast Asian Leaders Initiative:

A U.S. Department of State program, the YSEALI Academic Fellowship on Civic Engagement brought **25 undergraduates** and recently graduated students from Southeast Asia to ASU for a five-week institute that includes an academic residency, leadership development, community service activities and an educational study tour which concludes in Washington, D.C.



I have learned about my biases and appreciated how they inform my interactions with others. I know my strengths and how to leverage them to achieve my goals. I have also learned how to build lasting connections and how to provide value to all. I am aware of myself, I can lead myself better and inspire others.

— **Mandela Washington Fellows program participant**



# College of Global Futures Executive and Professional Education

 [collegeofglobalfutures.asu.edu/lifelong-learning/](https://collegeofglobalfutures.asu.edu/lifelong-learning/)



The College of Global Futures (CGF) is setting new standards for executive and professional education, designing impactful learning experiences for professionals across public, private and nonprofit sectors. Collaborating with leading faculty from four schools — the School of Sustainability, the School for the Future of Innovation in Society, the School for Ocean Futures and the School of Complex Adaptive Systems — CGF empowers leaders with the tools to guide us toward a sustainable global future.

## Key highlights



Delivered custom programs to industry leaders like **Mitsubishi Chemical Group, Hines, EY, Deloitte, Edward Jones and USAID.**



**17,000+**

individuals reached through our various modalities — both online and in-person.



Received the **President's Award for Sustainability** after launching three courses as part of the Sustainability Analyst Certificate Program.

## UN Sustainable Development Goals impacted











# ASU Lodestar Center for Philanthropy and Nonprofit Innovation

 [lodestar.asu.edu](http://lodestar.asu.edu)

For 25 years, the ASU Lodestar Center's Nonprofit Management Institute (NMI) has taught learners the most up-to-date trends, tools and best practices in leadership, management, strategic planning, marketing, fundraising, resource development and more. NMI's reach extends everywhere thanks to its use of in-person, hybrid and online teaching and learning modalities.

Each year, NMI's courses help participants better meet their organizations' missions and accelerate social impact in their communities. NMI is open to individuals of all educational backgrounds and levels of experience, from staff and management to volunteers, board members and philanthropists, as well as private-sector professionals seeking a career change.

## Key highlights

 <p><b>25 years</b> ASU Lodestar Center is celebrating in 2024.</p>	 <p><b>1,000+</b> NMI learner enrollments in the past year.</p>	 <p><b>50+</b> participants enrolled in NMI's grant writing courses in 2024.</p>	 <p><b>40+</b> participants enrolled in NMI's Nonprofit Marketing and Strategic Communications Certificate in 2024.</p>
--	--	---	--

In 2024, nearly **60 learners** participated in a full-day, in-person training for volunteer board members in Arizona's Verde Valley. The event, organized by the Sedona Public Library, is but one example of NMI's commitment to equip participants with the knowledge and skills needed to effectively serve on nonprofit boards.

“  
As I enter into a new chapter in my professional life, I feel so thankful for the practical learnings I received through the Nonprofit Marketing and Strategic Communications Certificate, as well as the re-energizing that came from meeting a diverse, insightful and welcoming group of industry peers, sharing ideas, encouragement and synergy together.  
— **Chris Bowman**,  
Nonprofit consultant,  
Adelaide, Australia

“  
I have benefited a great deal from my NMI classes. The classes helped expand my knowledge of the nonprofit sector and gave me great strategies to use in my own organization. I feel what I learned in the program helped me professionally as I was promoted to a director-level position while I was going through the program.  
— **Lloyd Hopkins**,  
Executive Director and Founder,  
Million Dollar Teacher Project  
Phoenix, AZ



# Thunderbird Executive Education

 [thunderbird.asu.edu/exec-ed](https://thunderbird.asu.edu/exec-ed)

Thunderbird Executive Education empowers global professionals and world-class organizations to shape business landscapes, impacting them by developing future-ready skills and connecting them to a network of diverse, global experts. Today, the world requires leaders with creativity, ingenuity and resilience more than ever. Through our individual courses, custom programs and partnerships, Thunderbird and its extensive network, provides cutting-edge programs that cultivate these global leaders.

Drawing upon decades of experience collaborating with a diverse array of global organizations across various industries and sectors, both private and public, and spanning numerous geographical locations and cultural contexts, Thunderbird adopts a multidimensional approach to executive education including:

- ▶ **Open enrollment programs:** Over 25 programs offered globally in-person and hybrid formats, featuring specialization in the fields of leadership and management, digital transformation, finance, marketing, ESG and sustainability.
- ▶ **Online, on demand courses:** Flexible offerings in areas such as data analytics and global leadership, accessible anytime, anywhere.
- ▶ **Customized non-credit programs:** Tailored experiences delivered at our state-of-the-art Thunderbird Global Headquarters in Phoenix or any global location to meet client needs.
- ▶ **Corporate partners program:** Exclusive access to discounted seats in open enrollment and on-demand programs, tailored to meet your organization's continuous learning and talent development needs with flexible subscription models.

## Key highlights




Custom Executive Education programs ranked **No. 17 internationally and No. 2 domestically** in Financial Times Executive Education rankings for 2024.



Over **200,000** executive education participants in nearly **150 countries** across its lifetime.



# W. P. Carey Executive Education

 [wpcarey.asu.edu/executive-education](https://wpcarey.asu.edu/executive-education)



W. P. Carey Executive Education is a pacesetter in delivering high-impact, flexible learning experiences for individuals and organizations. With multiple engagement paths — Open Enrollment, Custom Programs and a mix of onsite, online and hybrid learning experiences — W. P. Carey's Executive Education is not just a suite of programs; it's a partnership-driven, outcome-focused learning ecosystem.

## Key highlights

- ▶ Continued to grow the Executive Education, Corporate Partnerships and Lifelong Learning unit through both open enrollment programs and learning solutions designed specifically for companies **servicing 37% more learners in FY 2024 vs. 2023.**
- ▶ Continued to grow our financial literacy promotion partnership with Next Generation Personal Finance **creating opportunities for 342 teachers to take personal finance classes** — providing them with graduate credit hours and equipping them to teach personal finance in the classroom.
- ▶ Expanded our Supply Chain Pathways Program model with **certificates in Artificial Intelligence in Business, Business Analytics and Procurement** which can be applied toward courses in the W. P. Carey MBA and related specialized master's degrees.



# 04



## Personal, cultural and civic learning

ASU creates learning environments that help individuals broaden their perspectives, engage with diverse cultures and viewpoints and foster a lifelong commitment to community. Through innovative programs, ASU equips learners of all ages to thrive personally and contribute meaningfully to society.

The **ASU Art Museum** engages learners in interdisciplinary exploration of contemporary issues, using art to bridge education and community well-being. **ASU Next Chapter** supports midlife learners with programs like Thriving in Your Empty Nest Chapter, helping individuals ages 45 to 75+ navigate life transitions with purpose and renewed identity.

**CivEd and the Civic Leadership Institute** equip learners to engage actively in civic life, emphasizing ethical leadership and democratic participation. The **McCain Institute** develops global leaders with a focus on human rights and democracy, while **Mirabella** and the **Osher Lifelong Learning Institute** provide intellectually enriching opportunities for older adults, fostering lifelong curiosity and engagement.

The **Principled Innovation Toolkits** at the Mary Lou Fulton Teachers College inspire ethical practices across education, helping educators and learners make thoughtful decisions that benefit their communities.


### In this section

- ▶ **ASU Art Museum**
- ▶ **ASU Next Chapter**
- ▶ **CivEd and the Civic Leadership Institute**
- ▶ **McCain Institute**
- ▶ **Mirabella**
- ▶ **Osher Lifelong Learning Institute**





# ASU Art Museum

 [asartmuseum.org](https://asartmuseum.org)

The Arizona State University Art Museum (ASUAM) is a vibrant cultural hub where art converges with community engagement and social impact. Situated in Tempe, within the dynamic Greater Phoenix Valley, ASUAM actively addresses contemporary challenges—including climate change, demographic shifts and economic transitions—through the lens of visual arts. As a teaching museum, ASUAM serves as both a cultural landmark and an academic resource, offering interdisciplinary learning opportunities that span the sciences, humanities, journalism, sociology and the arts.

At the heart of ASUAM's mission is a commitment to champion diverse voices, foster democratic values and promote empathy through the transformative power of art. Through collaborative platforms, ASUAM connects artists, scholars and learners, amplifying ASU's research and knowledge exchange to benefit both the university and the broader public.

## Key highlights

### **Black Arts and Culture Council (BACC):**

In 2023, ASUAM launched BACC, a council dedicated to fundraising and supporting the museum's mission to add 100 works by Black artists to the permanent collection by 2032.

### **ASU Art Museum Legacy Fund:**

Established in partnership with the ASU Foundation, the Legacy Fund offers collectors, donors and estates an opportunity to donate valuable personal property – such as artwork, jewelry and antiques – directly supporting the museum's mission. Donated items are converted into charitable gifts, providing critical funding for exhibitions, residencies, collections and programs.

### **Major funding support:**

In FY24, ASUAM received \$922,000 in support of exhibitions and programs from prominent foundations, including the Terra Foundation for American Art, The Andy Warhol Foundation for the Visual Arts, E.A. Michelson Philanthropy, Riva Yares Foundation, Zalec Familian and Lilian Levinson Foundation, the Arizona Cardinals and the NFL.

### **Notable exhibitions:**

Over 10,000 visitors experienced Twin Flames: The George Floyd Uprising from Minneapolis to Phoenix, held from February to July 2024, highlighting the museum's role in exploring critical social movements.



I love coming to the ASU Art Museum because it's a safe place to discover new artists and art forms. It displays culturally and spiritually diverse art, like the Muddy Terrains installation and performance.

— **Sophomore at ASU**



# ASU Next Chapter

 [emptynest.asu.edu](https://emptynest.asu.edu)



Learning is a lifelong journey and ASU is committed to supporting learners at every stage. That's why ASU has partnered with the Modern Elder Academy (MEA), the world's first midlife wisdom school, to create programs specifically designed for those navigating midlife transitions. MEA helps individuals cultivate a renewed sense of purpose and embrace their own wisdom during these pivotal years, while ASU, as an inclusive and age-friendly university, is dedicated to making education accessible for all ages. Together, ASU and MEA are creating programs focused on the "third stage of life" — supporting individuals ages 45 to 75+ as they face life's important transitions.

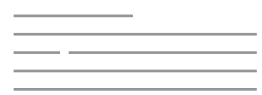
## Thriving in your Empty Nest Chapter

While ASU undergraduate learners embark on new adventures in adulthood, their parents are also reaching an important milestone: the transition to an empty nest. The first course in the ASU Next Chapter series, Thriving in Your Empty Nest Chapter, is designed specifically for parents of college-aged children. This online course combines MEA's expertise in midlife learning and reflection with ASU's commitment to lifelong education, empowering parents to renew their sense of purpose and identity beyond parenting. Launched in fall 2024, this course offers Sun Devil parents the tools and support they need to thrive in this new phase of life.



# CivEd and the Civic Leadership Institute

 [scetl.asu.edu/CivEd](https://scetl.asu.edu/CivEd)



To foster the leaders of tomorrow, the School of Civic and Economic Thought and Leadership (SCETL) curates specialized programs like CivEd and the Civic Leadership Institute. The school seamlessly blends classical wisdom with modern imperatives on ethical leadership, equipping learners with critical thinking and moral discernment. Its curriculum engages with age-old questions about life, freedom and governance, often through the lens of America's foundational principles.

Furthermore, affiliated with SCETL, the Center for American Civics serves as a neutral platform committed to elevating the level of civic knowledge and encouraging civil discourse among K-12 learners. Here, the timeless lessons of history intersect with the urgencies of modern leadership, inviting all to discover their potential for meaningful impact.

## Key highlights



**Ranked  
#4**

in social sciences by the National Science Foundation, putting it alongside Harvard and the University of Michigan and ahead of University of Pennsylvania and UCLA



**1K+**

learners engaged in civic programming.



I think these past couple of days have been a really fun and informative experience for me. Thank you for letting me be a part of this program and teaching me about how to become a more informed citizen!

— CLI 2023 Participant



I really believe I majorly benefited from getting taught by actual professors and being able to divide into groups to discuss different topics helped me obtain a far more complex understanding of different perspectives.

— CLI 2023 Participant





# McCain Institute

Located in the heart of Washington, D.C., the McCain Institute at Arizona State University is a nonpartisan organization inspired by Senator John McCain and his family's dedication to public service. Our programs defend democracy, advance human rights and empower character-driven leaders. Our unique power to convene leaders across the global political spectrum enables us to make a real impact on the world's most pressing challenges. Our goal is action, not talk, and like Senator McCain, we are fighting to create a free, safe and just world for all.

## Key highlights



Worked with 28 McCain Global Leaders and 16 National Security and Counterterrorism Fellows who utilized the Institute's curriculum to build leadership skills that serve causes in an increasingly complex, globalized world.



Held several events focused on securing the release of political hostages and detainees around the world, increasing our presence and public knowledge on an issue vital to Senator McCain's legacy.



Hosted the Sedona Forum, which featured Secretary of State Antony Blinken and Secretary of the Treasury Janet Yellen, as part of the Institute's annual, high-level gathering of national and international leaders to address the theme, Securing Our Insecure World. Dozens of ASU learners attended the panels to engage in and learn from high-level policy discussions.





# Mirabella

 [retirement.org/mirabella-asu](https://retirement.org/mirabella-asu)

Mirabella at ASU is a University-Based Retirement Community (UBRC) on the ASU Tempe Campus which forges a learning-centered, purpose-driven and intergenerational lifestyle that fully integrates retirees into the campus community as lifelong learners, valued learner supporters and champions of ASU's mission.

## Key highlights



**348**  
residents learning in the  
Mirabella community



**500+**  
hours/week residents  
volunteer on campus or  
engage with ASU learners

- ▶ Earned the first University-Based Retirement Community designation in the country, establishing Mirabella at ASU as the gold standard for senior living-university partnerships.
- ▶ Received the 2024 Best Practices Award by LeadingAge Arizona for its resident-led intergenerational programming.
- ▶ Featured in local, national and international news coverage on longevity innovation, including The Economist, BBC Worldwide and PBS Newshour.
- ▶ Partnered with **90% of ASU academic units** to develop new intergenerational learning experiences and 16 research collaborations to advance new insights and solutions for our age-diverse future.



The truth is, friendships that venture beyond age to curate new perspectives, aid in mentorship and reduce the need for comparison that's often prominent in friendships with people of the same age.

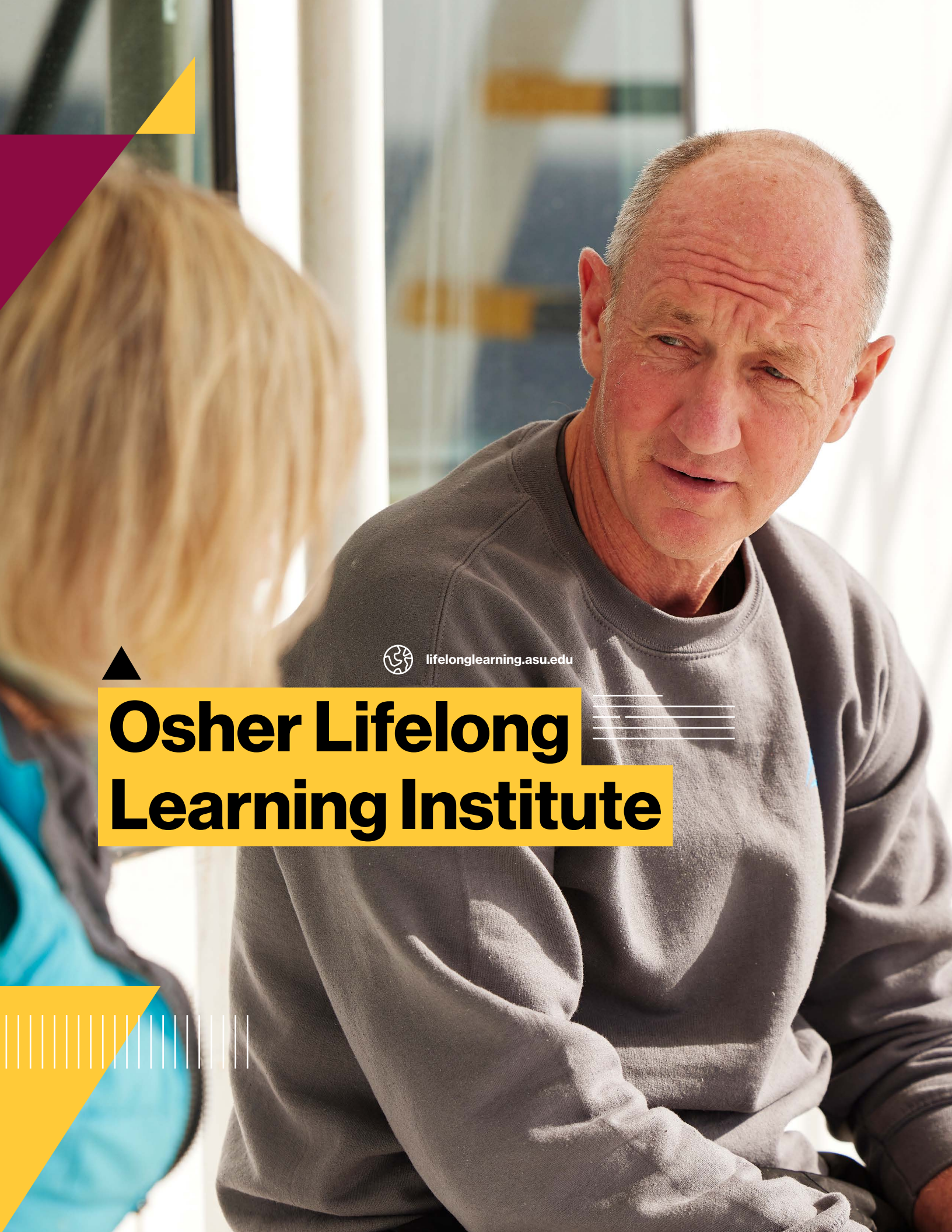
— **Allysa Horton**,  
ASU learner



In my first year I took classes in media studies, cultural geography and government and politics. I am now taking a course on women in film and, for the most part, seek studies in areas that I know little about. In fact, many classes are in fields of study that did not even exist 50 years ago.

— **Bobbie Reed**,  
Mirabella resident





 [lifelonglearning.asu.edu](http://lifelonglearning.asu.edu)

# Osher Lifelong Learning Institute

Osher Lifelong Learning Institute (OLLI) is an exemplar of best practices for innovative, lifelong learning. OLLI creates multiple pathways for learning and transformative connections, among Arizona residents 50 and older. OLLI encourages accessible, co-generational learning available both via Zoom and at fifteen locations across the valley.

## Key highlights



**1,850**

active OLLI members



**350+**

engaging and enriching lifelong learning classes, trips and scholarship workshops



**5** new museum and cultural institution partnerships

**Expanded online offerings with a Zoom-only membership option**



OLLI provides me the opportunity to explore so many areas that weren't on my radar when I was younger! Who knew Art and History could be so interesting! Having always been someone who had a keen curiosity for learning all sorts of stuff, once I discovered OLLI@ASU, I felt like I found a hidden treasure! When each schedule comes out, I pore over it, searching for what new areas I can explore!

— **Wendy Hultsman**  
OLLI participant



OLLI at ASU supports my curiosity and creativity, introduces me to a range of diverse and thoughtful presenters and connects me with like-minded folks who inspire and gladden my heart.

— **Nancy Wolter**  
OLLI participant



# 05

## Open learning

ASU is advancing Open learning, breaking down barriers to education and creating pathways for learners worldwide. Through innovative programs and global collaborations, ASU offers accessible, flexible and impactful learning opportunities, empowering individuals to gain skills, pursue careers and thrive in an interconnected world.

### In this section

- ▶ Arizona PBS
- ▶ Baobab
- ▶ CronkitePro
- ▶ DreamBuilder
- ▶ DreamCatcher
- ▶ Education for Humanity
- ▶ Global Launch
- ▶ Learning Sparks
- ▶ Study Hall
- ▶ Najafi 100 Million Learners Global Initiative



# Arizona PBS

azpbs.org



Arizona PBS offers a diverse range of educational content to **1.5 million** households weekly and with over 69,000 members, it stands as a trusted community resource in Arizona. In spring 2024, as the primary election cycle ramped up, the station built on to further enhance its reputation as a trusted resource by providing in-depth election coverage via its daily news and public affairs program, “Arizona Horizon,” and its “AZ Votes 2024” election coverage initiative. In addition to these efforts, the station collaborated with the Center for the Future of Arizona to execute an initiative aimed at educating citizens on civic engagement. As part of this collaboration, the station produced a four-episode digital vignette video series, “Voter Ed.”

Beyond its expansive broadcast reach and public affairs news efforts, Arizona PBS connects with more than **60,000 educators** across the state each month, offering free digital resources through PBS LearningMedia. Moreover, with regional education coordinators located across the state, the station provides professional development opportunities for PreK-12 educators and technical assistance, both of which are supported by grants.

### Supporting the Education Workforce:

Arizona PBS serves as the administrative home for the First Things First College Scholarship program and Arizona Early Childhood Workforce Registry. This system provides a statewide data snapshot of the early childhood education profession, including number of educators in the field, degree completion and employment status. In FY24, 1,243 early childhood educators working on AA or BA degrees received **\$1,724,356** in scholarships toward tuition, books and fees.



With the help of this [First Things First] scholarship, I know the positive impact she's going to have on every child that walks into her classroom.

— **Alma Ramirez,**  
Educator and parent of a college scholar





# Baobab

 [mcf scholars.asu.edu/programs/baobab-scholars-community-platform](https://mcf scholars.asu.edu/programs/baobab-scholars-community-platform)

ASU has partnered with the Mastercard Foundation to launch Baobab, a social learning network dedicated to cultivating transformative leaders across Africa. With a community of over 73,000 members, Baobab is a resource-rich platform aimed at maximizing both personal and professional development.

Baobab acts as a virtual meeting ground for those committed to catalyzing change in Africa, providing a scalable engagement strategy that continues to flourish. Members access a diverse suite of resources, including over 130 courses in English and French, an opportunities board featuring more than 6,000 job and internship listings and a unique mentorship program, delivering support either one-on-one or in a group setting.

Baobab has hosted 31 African scholars in a work-study master's program specifically designed to nurture the next wave of edtech talent in Africa. Beyond this, Baobab's youth programs have successfully imparted valuable skills to over 200 young Africans, providing them with paid work opportunities and fostering their readiness for the workforce.

Through its multifaceted offerings, Baobab exemplifies ASU's commitment to connecting learning to actionable impact, making strides towards a more sustainable and empowered Africa.

## Key highlights



**74K+**

platform members



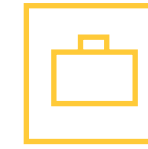
**60K+**

course enrollments



**4,202**

Scholars matched with individual mentors



**6,000+**

jobs, internships and scholarships posted to Baobab opportunities board



Being a part of the Baobab community has enhanced my professional development journey through the work I do every day. I interact with brilliant minds daily that challenge me and my life decisions. I am growing in my capabilities around leadership, networking and intercultural empathy because of the rich diversity within the community.

— **Mastercard Foundation Scholar alumnus from Uganda**



After completing my advanced level education with the Mastercard Foundation Scholars Program at Brac Uganda, I was introduced to the Baobab platform. This platform provided me with access to different scholarship opportunities and a network of young people who guided me through the application. In July 2018, I was awarded a fully funded undergraduate scholarship to pursue my studies at KNUST, an opportunity that has transformed my life in so many ways, thanks to Baobab. The platform has further helped me to develop my social entrepreneurship skills and I am still leveraging its network to implement my social venture project and create an impact in my community. Baobab continues to change many young people's stories in ways they have never imagined!

— **Mastercard Foundation Scholar alumnus from Uganda**



# CronkitePro

 [cronkite.asu.edu/professional-development](https://cronkite.asu.edu/professional-development)



ASU's Cronkite School has successfully expanded its "teaching hospital" model to serve professionals in the media and communications sectors. Through CronkitePro, ASU offers hands-on instruction under industry leaders, leading to measurable career growth among participants.

## Key highlights



The digital marketing world changes constantly. With the **Digital Marketing Boot Camp**, participants become fluent in both the foundational practices and the latest platforms needed to excel in this fast-paced field and stay ahead of the trends.



Healthcare professionals play a critical role in spreading credible information. **Patient Care through Credible Health Media** offers tools to combat misinformation, hoaxes and conspiracies that thwart public health efforts.



I found the sessions with Cronkite's excellent journalism professors to be particularly valuable. As a mid-career reporter, it was helpful to receive advice from these professors that I can apply to my everyday work.

— Participant in training for health care reporters





# DreamBuilder



The Freeport-McMoRan Foundation created DreamBuilder in partnership with the Thunderbird School of Global Management. Available in both Spanish and English, DreamBuilder is a free online training and certification program that consists of courses covering the foundational business knowledge needed to start and grow a small business. Courses include marketing, pricing, bookkeeping and more, making learning fun through games, exercises, storytelling and video testimonials from successful entrepreneurs.

Initially the program focused on women entrepreneurs and today it is used globally by more than 120,000 women and men of all ages who want to pursue their dreams of business ownership. DreamBuilder is available at no cost in English and Spanish to both online and offline learners.

## Key highlights

**180+**

countries where DreamBuilder learners have engaged

**16,730**

graduates completed the course in 2023-2024

**62,997**

total graduates as of June 2024

**8,334**

learners have completed the supplemental Dream Big course since it was added to the platform, connecting women entrepreneurs to value chains

“

The DreamBuilder program marked a before and after for me; it made me understand the importance of achieving our goals, as well as how to manage, market and calculate production costs.

— **Liz Capira**,  
from Tuti, Peru. Owner of Dairy Revolution and 2023 DreamBuilder graduate

“

I feel like the DreamBuilder program was designed for people like me who don't know all the details but want to do something that fulfills their life and dreams. There were so many things that I learned in the program. We met for nine weeks, learning from classes, guest speakers and networking with other business owners and potential entrepreneurs.

— **Sherry Quinlan**,  
owner of the Nook Bookstore in Safford, Arizona. 2024 DreamBuilder graduate



# DreamCatcher

 [thunderbird.asu.edu/lifelong-learning/entrepreneurship/dream-catcher](https://thunderbird.asu.edu/lifelong-learning/entrepreneurship/dream-catcher)

Project DreamCatcher was developed by the Freeport McMoRan Foundation, in partnership with Thunderbird School of Global Management, to provide an empowering, no-cost business development experience specifically tailored for Native American women entrepreneurs from Arizona tribes. Hosted at Thunderbird Global Headquarters, this week-long immersion includes culturally relevant business instruction, networking opportunities and visits to successful indigenous businesses.

With expert instruction from Thunderbird faculty well-versed in indigenous business issues, the program experience is further enriched by nurturing a cohort community and providing a lasting support network for alumni. Inclusive of lodging and meals, this initiative seamlessly aligns with our commitment to fostering an ecosystem of lifelong learning and community engagement.

## Key highlights

### Participants in 2023-2024 include representation from ten Tribal Nations

including the Hualapai Tribe, Navajo Nation, San Carlos Apache Tribe, White Mountain Apache Tribe, Tohono O'odham Nation, Gila River Indian Community, Hopi Tribe, Pascua Yaqui Tribe, Salt River Pima-Maricopa Indian Community and Zuni Pueblo.

**113 women** were selected and graduated from the program across four cohorts in 2023-2024.

**100%** of participants reported that they would recommend DreamCatcher to other women.

**90%** of participants operating businesses reported growth within one year of their participation.



I'd like to thank Project DreamCatcher for giving me the tools to help my business grow and for introducing me to all the amazing women I met. I look forward to seeing what we all accomplish.

— **Storm Tso**,  
owner of Hopi Grounds,  
from the Hopi reservation,  
2023 DreamCatcher graduate





# Education for Humanity



asuforreugees.asu.edu/education-humanity



Education for Humanity is working in collaboration with the United Nations Refugee Agency and humanitarian agencies to provide post-secondary preparation through tech-enabled solutions that support refugee learners and local communities affected by displacement. Since its inception in 2017, the initiative has served nearly 15,000 learners in 20 countries around the world and co-leads multiple international networks including the Connected Learning in Crisis Consortium, Global University Academy and Alliance for Education of Women in Afghanistan.

Image credit: Marc Alan Sperber/ASU

Utilized SunSPOT offline technology to launch offline-first programs in partnership with **humanitarian organizations in Lebanon, Ethiopia, Rwanda and Thailand**. This innovative solution that allows access to courses without internet or electricity augments the ongoing programming that Education for Humanity is implementing with partners in refugee camps and urban communities around the world.

Became co-leaders of the **Alliance for Education of Women in Afghanistan and the Global University Academy** which prioritize the implementation of high-quality educational programs in areas of conflict and serve as convening platforms for the establishment of promising practices in the field of education in emergencies.

Welcomed two refugee students on campus as part of the inaugural Welcome Corps on Campus program, a Department of State funded program that links higher education to refugee resettlement and a pathway to U.S. citizenship.

Implemented a **government-funded Refugee Career Pathways program in Maricopa County**, working with partners to support local refugees to receive training, certification and guidance to advance in their chosen career fields of interest.



Your initiatives and programs have made a significant difference in the lives of many individuals who have found in ASU a window of hope and an opportunity to achieve their academic and professional aspirations. Through your courses and educational programs, many refugees have been able to improve their skills, enhance their knowledge and qualify for the job market with competitive abilities. Your efforts in providing high-quality education accessible to all, regardless of their circumstances, have made a tangible positive impact on many lives.

— **Ehab Badwi**,  
General Director of Syrian Youth Assembly



One of our students wrote to us asking to be transferred from the morning group to the evening group. After a short conversation, we found out that he was a soldier-communicator on the front line, studying from his phone in a dugout in the evenings, connected to the network via a starlink. He did not provide us with a photo of himself, but sent us a photo of the place where he was studying.

— **Program partner**,  
Ukraine





# Global Launch

 [globallaunch.asu.edu](http://globallaunch.asu.edu)

Founded in 1974, ASU Global Launch provides comprehensive English language training, university preparedness and holistic skill development for international learners and professionals. As one of the largest English language programs in the U.S., it has impacted over a million learners both in-person and online. The program embraces the diversity of its participants, offering a wide range of services from flexible online English courses and immersive campus experiences to specialized teaching certifications and English proficiency assessments for ASU admission.

## Key highlights



### Transforming the way English is taught around the world:

Launched Teach English Now! certification program, which provides **150-hours** of instruction to help tens of thousands enter the teaching profession or refresh their skills.



### Improving internationalization at ASU:

**788 Global Launch** learners are currently enrolled in ASU degree programs.



### Developing a highly qualified workforce:

Enrolled over **10,000 learners in Mexico** in the online course English for the Semiconductor Industry and launched the English for Healthcare course to better career opportunities for immigrants to the US.



### Using cutting-edge technology to improve learner success:

In conjunction with ASU's NEXT Lab, Global Launch has been pioneering the use of virtual reality to allow learners additional English-language practice.



Being an ESL teacher is a grand adventure into the lives and cultures of people from all corners of the world. My students have broadened my mind, challenged me and inspired me.

— **April Minerich**  
Senior Global Educator



Global Launch not only improved my language skills but also gave me the confidence to pursue my dreams. My journey from a new arrival in 2016 to a PhD student at ASU is a testament to its impact. The skills and confidence I acquired from the Campus Immersion program at Global Launch continue to serve me in advanced research, presentations and teaching. For any international student, I highly recommend Global Launch. It is a gateway to academic success and personal growth.

— **Mohammed Alshahrani**  
Saudi Arabia





# Learning Sparks

 [sparks.learning.asu.edu](https://sparks.learning.asu.edu)

Learning Sparks ignites curiosity and teaches new skills with short-form, open access videos on hundreds of in-demand science and technology topics. Learning Sparks breaks down big ideas into bite-sized experiences that are easy to digest for learners ranging from high school learners to working professionals. Five-minute videos combine expert ASU teaching with industry-leading filmmaking to guide learners through complex ideas shaping the jobs of the future.

Through Learning Sparks, ASU aims to inspire millions of learners to explore vital industries — driving accessible, high-quality education to shape the workforce of the future. Learning Sparks feature subjects in high-tech sectors to advance economic growth, including engineering, 3D modeling, data science, bioinformatics, virtual reality and artificial intelligence.

## Highlighted Stats



**171**

videos launched



**117**

ASU faculty engaged



**16,844**

learning sessions



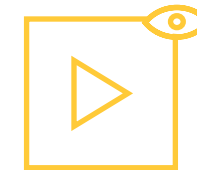
# Study Hall

 [gostudyhall.com](http://gostudyhall.com)



Study Hall is a first-of-its-kind path to college that starts on YouTube. Through its YouTube channel, learners find open-access videos tailored to guide, inform and aid them as they navigate the college application process and succeed in their academic pursuits. When they're ready for the next step, Study Hall offers accessible first-year Arizona State University courses and widely transferable credits.

## Highlighted Stats



# 10+ million

video views



# 781

videos available



# 103,431

YouTube subscriptions



# 6,221

enrolled learners in Study Hall courses



So happy 🍀🍀🍀 I'm 24 and finally feeling motivated to go to school and Study Hall and fast guides has been such a necessary resource for me. The videos help me feel so much less scared about starting the whole process!

— Study Hall learner





# Najafi 100 Million Learners Global Initiative

 100millionlearners.org

The Najafi 100 Million Learners Global Initiative offers online, global education from a world-class accredited institution at absolutely no cost to learners across the globe. The initiative advances Thunderbird's mission to empower and influence global leaders and managers to advance inclusive and sustainable prosperity worldwide. The Global Initiative offers three pathways for learners depending on their current education levels:

- ▶ **Foundational program:** Accessible to learners of any educational background, providing essential skills and knowledge.
- ▶ **Intermediate program:** Designed for those with high school or undergraduate education, offering more advanced content.
- ▶ **Advanced program:** Aimed at graduate-level learners seeking specialized and in-depth expertise.

## Key highlights:



# 70,000+

learners across the globe in 2024



The Foundational program is currently available in **21 languages online**, at no cost to learners. Learners register for the program by choosing their preferred language and gain access to global leadership and management courses.



I learned that we are all responsible for what is happening to the planet—it's not just the job of governments or environmental organizations. We can all help recover and conserve the planet, starting from home. It's not about using up resources, it's about enriching ourselves with knowledge and giving back to the planet. We have the power to address deforestation, pollution and other damages by reusing, repairing and extending the life of what we have, like clothing. Textile waste can be repurposed into items like pet beds, mats and more. If we understood the resources that went into creating these materials, we'd keep them out of landfills, helping to create a cleaner, CO2-free planet.

— **Ingrid Torres**,  
Columbia, Global Entrepreneurship and Innovation participant





# A special thanks to the ASU

team supporting learners  
in Arizona, the U.S.  
and throughout  
the globe.



**Aaron Hashimoto**  
Enrollment and Student Success Coach, ASU  
Local-West Hawai'i, Learning Enterprise

**Adam Dreier**  
Sr. Software Engineer, Learning Enterprise

**Alicia Iniguez**  
Asst. VP, Outreach, Access ASU

**Allison Brown**  
Mgr., Social Media and Learner Advocacy,  
Learning Enterprise

**Ameer El-Mallawany**  
Architect of Learning and Student Success, ASU  
Local – Los Angeles, Learning Enterprise

**An-PhuongHa**  
Web User Experience Design, Inspark,  
Learning Enterprise

**Anita Dann**  
Asst. Dir. of Special Projects, ASU Local,  
Learning Enterprise

**Audrey Moreno**  
Sr. Dir. of National Partnerships, Foundational  
Learning, Learning Enterprise

**Bianca Zietal**  
Instructional Designer Assoc., ULCs,  
Learning Enterprise

**Brent Maddin**  
Exec. Dir., Next Education Workforce Initiative

**Brittany Hiroto**  
Exec. Administrative Specialist and Novus  
On-Site Mgr., Learning Enterprise

**Candice Bohrer**  
Success Coach, Learning Enterprise

**Caroline Dunn-Rankin**  
Sr. Dir., Impact Assessment and Enterprise  
Collaboration, Learning Enterprise

**Charla Griffy-Brown**  
Dean and Dir. Gen., Thunderbird School of Global  
Management

**Christina Avila**  
Asst. VP, Outreach, Access ASU

**Aaron Ghena**  
Videographer and Producer,  
Learning Enterprise

**Alana Williams**  
Enrollment and Student Success Coach, ASU  
Local – Los Angeles, Learning Enterprise

**Alicia Holder**  
Sr. Dir., Buss. Dev., Exec Ed., Corp. Partnerships  
and Lifelong Learning

**Amanda Gulley**  
Chief of Product and UX, EdPlus at ASU

**Amisha Kapadia**  
Buss. Operations Specialist Sr.,  
Learning Enterprise

**Anahi Mendez**  
Asst. Creative Dir. and Global Initiatives  
Marketing Mgr., Learning Enterprise

**Anthony Ferreria**  
Site Dir., ASU Local-Los Angeles,  
Learning Enterprise

**Battinto Batts Jr.**  
Dead and Prof., Journalism and  
Mass Comm

**Blanca Ruiz-Moreno**  
System Support Analyst,  
Learning Enterprise

**Brian Nethero**  
Assoc. Dir., EdPlus at ASU

**Brittany Holmes**  
Assoc. Dir., Global Outreach  
and Extended Ed

**Cari Frederick**  
Videographer, ULC,  
Learning Enterprise

**Casey Evans**  
COO, EdPlus at ASU

**Charles Kazilek**  
Exec. Dir., K-12 Outreach, Watts College of Public  
Service and Community Solutions

**Corinn Carter**  
Dir. Of Internal Initiatives, ASU Preparatory  
Academy

**Adam Wilson**  
Buss. Operations Specialist,  
Learning Enterprise

**Alejandra Dashe**  
Sr. Instructional Designer, Foundational Learning,  
Learning Enterprise

**Alina Thomas**  
Learner Support Coach, Product Team, Learning  
Enterprise

**Amanda Athey**  
Dir., Professional Dev. and Engagement

**Amy McGrath**  
VP Ed. Outreach and MD,  
ASU Preparatory Academy

**Anahi Godinez**  
Dir. of Workforce Partnerships, Career and  
Professional Learning, Learning Enterprise

**April Andrews**  
Mgr., Demand Generation,  
Learning Enterprise

**Ben Kaufman**  
Assoc. Dir., Buss. Dev. and Str. Partnerships,  
College of Health Solutions

**Bobbi Doherty**  
Online Course Mgr., Stack Leader (History),  
Learning Enterprise

**Brianna Johnson**  
Financial and Planning Analyst, Learning  
Enterprise

**Camille Harris**  
Success Coach, Learning Enterprise

**Carole Basile**  
Dean and Prof., MLT Teachers College

**Catalina Cayetano**  
Asst. Teaching Prof., School of Social and  
Behavioral Sciences

**Charulatha Srinivasan**  
Assoc. Instructional Designer, Foundational  
Learning, Learning Enterprise

**Craig Laser**  
Asst. Dean, Str. Partnerships and Innovation  
and Clinical Assoc. Prof.



**Cristina Ramos**  
ASU Local Enrollment and Student Success Coach, Jr., Learning Enterprise

**Dan Shillcutt**  
Sr. UX Researcher, Career and Professional Learning, Learning Enterprise

**David Schonstein**  
Head of Inspark, Learning Enterprise

**Derek Keith**  
Sr. Project Mgr., Foundational Learning, Learning Enterprise

**Elizabeth Vasquez**  
Site Dir., ASU Local–Yuma, Learning Enterprise

**Emma Stein**  
Online Course Mgr., Stack Leader (Biology and Environmental Science), LE

**Fabiha Naumi**  
Assoc. Dir., Learning Enterprise

**Gerald Gordon**  
Systems Support Analyst (IT), Exec. Administration

**Gorkem Akcan**  
Online Course Mgr., Stack Leader (Economics and Finance), Learning Enterprise

**Heidi Fausel**  
HR People and Talent Coordinator, Learning Enterprise

**Jaclyn Smith Price**  
Sr. Product Mgr., Career and Professional Learning, Learning Enterprise

**Jamie Pickle**  
Online Course Mgr./Stack Leader (Project Management), Universal Pathways, LE

**Jason Marcuson**  
Exec. Dir. of Enterprise Exec. Ed., Career and Professional Learning, Learning Enterprise

**Jeffrey Cohen**  
Dean of Humanities, The College of Liberal Arts and Sciences

**Jennifer Hale**  
Online Course Mgr., Stack Leader (Math), Learning Enterprise

**Cynthia Lietz**  
Dean and President's Prof., Watts College of Public Service and Community Solutions

**Daniel Falch**  
Program Design Mgr., Learning Enterprise

**David Young**  
Program Mgr., Learning Sparks Studio, Learning Enterprise

**Diane Ellison**  
Asst. Dir., Learning Enterprise

**Elizabeth Reel**  
Sr. Corporate Partner Portfolio Mgr., Strategic initiatives, Learning Enterprise

**Eric Burns**  
Sr. Program Mgr., Investment Development and Success, Learning Enterprise

**Faith Dalzell**  
Program Mgr., Enterprise and Global Projects, Learning Enterprise

**GinaWilt**  
Dir. and Asst. Clinical Prof., MLF Teachers College

**Gustavo Zaragoza**  
Learner Support Coach, Product Team, Learning Enterprise

**Heidi Jacobson**  
Dir., Youth Entrepreneurship, J.Orin Edson Entrepreneurship and Innovation Inst.

**James Rund**  
Sr. VP, Ed. Outreach, Std. Svcs. and Assoc. Prof., Educational Outreach and Student Services

**Jared Swerzenski**  
Dir., Osher Lifelong Learning Institute

**Jazmine Turner**  
Online Course Mgr., Mathematics, Foundational Learning, Learning Enterprise

**Jeffrey Goss**  
Exec. Dir., Global Outreach and Extended Education

**Jennifer Jones**  
Sr. Dir. of Operations, Learning Enterprise

**Damon Yoshida**  
Site Dir., ASU Local–West Hawai'i, Learning Enterprise

**Darcy Richardson**  
Sr. Dir. of Implementation, Career and Professional Learning, Learning Enterprise

**Dawn Spring**  
Online Course Mgr., Foundational Learning ULCs, Learning Enterprise

**Dianna Lippincott**  
Dir., Global Launch

**Elizabeth Wentz**  
Vice Provost and Dean, Graduate College

**Erin Wilson**  
Principal Instructional Designer, Career and Professional Learning, Learning Enterprise

**Ferran Garcia-Pichel**  
Interim Dean of Natural Sciences, The College of Liberal Arts and Sciences

**Gloria Espinoza Minnihan**  
Dir., Online Curriculum and Digital Innovation, The College of Liberal Arts and Sciences

**Hector Zelaya**  
Dir., Bob Ramsey Exec. Ed.

**Ian Gould**  
President's Prof., Assoc. Dean, Online and Digital Initiatives, School of Molecular Sciences

**Jamie Kowalski**  
Learner Support Coach, Product Team, Learning Enterprise

**Jason Wiley**  
Dir. of Learner Success, Product Team, Learning Enterprise

**Jeanne Ratliff**  
Dir., Client Relationship, Thunderbird School of Global Management

**Jennifer Dejesus**  
Online Course Coordinator (Psychology), Learning Enterprise

**Jennifer Janicki**  
Project Manager, Sr., Herberger Institute for Design and the Arts

**Jeremy Cauthen**  
Dir. Sr., Brand Engagement and Communications, AZ PBS

**Joanna Grabski**  
Dean and Foundation Prof., College of Integrative Sciences and Arts

**Jorge Cruz**  
Operations Project Mgr., Learning Enterprise

**Judith Karshmer**  
Dean, Prof. and ASU Chief Wellness Officer, Edson College of Nursing and Health Innovation

**Kamaree Hoskins**  
Instructional Designer, Foundational Learning, Learning Enterprise

**Karla Moeller**  
Educational Outreach Exec. Cdr., Office of University Provost

**Katherine O'Flaherty**  
Deans Fellow and Honors Faculty Fellow

**Kay Johnson**  
Dir. or Str.Communication, ASU Prep

**Kelly Jasper**  
Dir., Str. Marketing and Communications, MLF Teachers College

**Kenro Kusumi**  
Sr. Vice Provost, Dean and Prof., The College of Liberal Arts and Sciences

**Kimberly Flack**  
Sr. Dir., Education and Community Impact, AZ PBS

**Kristin Hersant**  
Global Marketing Officer, Learning Enterprise

**Larissa Dinh**  
Sr. Dir. of Product, Learning Enterprise

**Laura Wapelhorst**  
Exec. Dir., Office of University Affairs

**Leah Capps**  
Program Coordinator, Sr., CISA, Office of the Dean

**Jill Rogier**  
Head of Schools, Prep Digital

**Joe Chapman**  
Dir. of Student Services, LE and EdPlus, Learning Enterprise

**Jorge Calderon**  
Sr. Support Systems Specialist, Learning Enterprise

**Julie Koepf**  
Enrollment and Student Success Coach, ASU Local–Yuma, Learning Enterprise

**Kara Smith**  
ASU Local Enrollment and Student Success Coach, Learning Enterprise

**Kashyap Basu**  
Multimedia Creative Designer, Learning Enterprise

**Kathryn Dumaine**  
Program Mgr., Corp. Partnerships, Career and Professional Learning, Learning Enterprise

**Kayleen Lilly**  
Department HR Specialist Sr., Learning Enterprise

**Kelly Barr**  
Assoc. VP and Chief Alliance Officer, Global Futures Laboratory

**Kimberly O'Hanlon**  
Marketing Dir., Universal Pathways, Learning Enterprise

**Korbi Adams**  
Sr. Program Mgr., MLF Teachers College

**Kyle Rassel**  
Sr. Dir., Marketing Operations, Learning Enterprise

**Laura Juarez**  
Student Success Coach, ASU Local – Yuma, Learning Enterprise

**Lauryn Pedersen**  
Learner Support Coach, Product Team, Learning Enterprise

**Leah Lommel**  
Chief Administrative Officer, ASU Preparatory Academy

**Joanna Zimmerman**  
Dir., International Grant Initiatives, EdPlus at ASU

**Joey Dormandy**  
Asst. Dean, Graduate Programs and New Education Initiatives

**Joseph Davis**  
Visual and Creative Designer, Career and Professional Learning, Learning Enterprise

**Julie Liss**  
Sr. Assoc. Dean and Professor, College of Health Solutions

**Karen Chalmers**  
Exec. Administration Support Specialist, Learning Enterprise

**Katherine Wilson**  
Online Course Coordinator (English), Learning Enterprise

**Kaushiki Kansara**  
Online Course Mgr., Computer Science, Learning Enterprise

**Kelly Schuster**  
Sr. Dir. of Marketing, Corporate Partnerships, Learning Enterprise

**Kelly West**  
Dir., Corp. Partnerships, Exec. Ed., Lifelong Learning

**Kimberly Merritt**  
Vice President, Learning Enterprise

**Kristen Rothermel**  
Sr. Coordinator, Hybrid Programs, Learning Enterprise

**Kyle Squires**  
Sr. Vice Provost of Engineering, Computing and Technology; Vice Provost of the Polytechnic Campus; Dean, Fulton Schools of Engineering

**Laura Polk**  
Exec. Dir., Digital Initiatives and Learner Experience, Thunderbird School of Global Management

**Lawrence Alben**  
Deputy Dean of Executive Education and Clinical Professor, TSGM Administration

**Lenora Ott**  
Dir., Learning Design, Learning Enterprise



**Levi Colton**  
Dir. of Programs and Social Impact, Lodestar Center for Philanthropy and Nonprofit Innovation

**Lindy Foust**  
Enterprise Knowledge Manager, ASU Prep

**Lucien Kahn**  
Product Mgr., Learning Enterprise

**Magda Hinojosa**  
Dean of Social Sciences, The College of Liberal Arts and Sciences

**Manuel Aviles-Santiago**  
Vice Dean and Professor, CISA, Leadership

**Maria Anguiano**  
Exec. Vice President, Learning Enterprise

**Marissa Huth**  
Instructional Designer, Learning Enterprise

**Mark Kaech**  
Director, Sr., Global Academic Initiatives

**Melissa Waite**  
Project Coordinator, Career and Professional Learning, Learning Enterprise

**Meredyth Hendricks**  
Assoc. VP, Career and Professional Learning, Learning Enterprise

**Michael Yudell**  
Interim Dean and Professor, College of Health Solutions

**Miki Garcia**  
Director, Sr., ASU Art Museum

**Natalie Turner**  
Buss. Analyst, Learning Enterprise

**Nicholas Rogers**  
Online Course Mgr., Stack Leader (Biology and Health), Learning Enterprise

**Nick Sabato**  
Director, Sr., Education for Humanity

**Linda Ricchiuti**  
Exec. Dir., J. Orin Edson Entrepreneurship and Innovation Institute

**Lisa Flesher**  
Chief, Realm 4 Proj Acceleration, EdPlus at ASU

**Madeline Gombis**  
Instructional Designer, Learning Enterprise

**Maira Hernandez**  
Sr. Mgr. of Recruitment for ASU Local, Learning Enterprise

**Marco Serrato**  
Assoc. VP of Enterprise Collaborations, Learning Enterprise

**Maria Rodriguez**  
Mgr. ASU Local Chula Vista, Learning Enterprise

**Marissa Scragg**  
Asst. Dir., Strategic Support and Resource Development, J. Orin Edson Entrepreneurship and Innovation Institute

**Martha (Raquel) Gonzales**  
Head of Marketing, ASU Local, Learning Enterprise

**Melissa Huapaya**  
Sr. Dir., Strategic Initiative Development, Learning Enterprise

**Michael Cacciatore**  
Partnership Mgr. – Florida, Universal Pathways, Learning Enterprise

**Michelle Jackson**  
Technical Operations and Support Analyst, Sr., Learning Enterprise

**Mitchell Friedland**  
Workforce Learning Dir., Learning Enterprise

**Natasha Burrell**  
Fellow, Health Literacy, Universal Pathways, Learning Enterprise

**Nicholas (Hiroshi) Metzker**  
Sr. Marketing Automation Specialist, Learning Enterprise

**Nicole Kallman**  
Asst. Dir., Enterprise Collaborations, Learning Enterprise

**Lindsey Beagley**  
Dir., Lifelong University Engagement, Office of University Provost

**Lori Bello**  
Exec. Dir., CISA, Office of the Dean

**Madison Sutton**  
Asst. Dir., Strategic Initiative Development, Learning Enterprise

**Malcolm Holmes**  
Exec. Dir. of Strategic Initiatives, Journalism and Mass Comm

**Margret (Marleigh) Hurlburt**  
Student Leadership Program Mgr., ASU Local – Los Angeles, Learning Enterprise

**Maria (Beatriz) Fuentes-Anderson**  
Instructional Design Program Mgr. Sr., Humanities, Learning Enterprise

**Marjory Marshall**  
Sr. Program Mgr., Learning Enterprise

**Martina Castro**  
ASU Local Enrollment and Student Success Coach, Learning Enterprise

**Meredith Toth**  
Associate Dean, Learning Systems and Design and Teaching Professor, MLF Teachers College

**Michael Velazquez**  
Program Specialist, Career and Professional Learning, Learning Enterprise

**Michelle Lyons-Mayer**  
Sr. Dir. of Global Development, Thunderbird School of Global Management

**Nadia Viswanath**  
Chief Operating Officer, Learning Enterprise

**Natasha Morrison**  
Sr. Dir. of Strategic Partnerships, Learning Enterprise

**Nichole Jimenez**  
Administrative Specialist, Learning Enterprise

**Nika Gueci**  
Executive Director for University Engagement: Center for Mindfulness, Compassion and Resilience

**Nikki Pomazak**  
Site Dir., ASU Local – Washington, D.C., Learning Enterprise

**Octavio Heredia**  
Director, Global Outreach and Extended Ed.

**Ouadir Baalouchi**  
Sr. Project Mgr., Learning Enterprise

**Patrick Rossol-Allison**  
Assoc. VP of Strategic Initiatives, Learning Enterprise

**Peter Schlosser**  
VP, Vice Provost and Acting Dean, College of Global Futures

**Rachel Reed**  
Student Success Designer, Learning Enterprise

**Raven Gates**  
Learning Technology Specialist, Sr., Learning Enterprise

**Rob Buelow**  
Program Dir., AZNext Grant, Department of Information Systems

**Rochel Phairow**  
Online Course Mgr., Sociology, Foundational Learning, Learning Enterprise

**Rowan Defaria**  
Dir., Herberger Online Learning, Herberger Institute for Design and the Arts

**Ryan Johnson**  
Exec. Dir., Executive and Professional Education, College of Global Futures

**Sarah Johnson**  
Dir., ULC Pathways, Learning Enterprise

**Savinay Nangalia**  
Dir. of Engineering, Learning Enterprise

**Sean Nader**  
Learner Support Coach, Product Team, Learning Enterprise

**Shannon McKinnon**  
Asst. Dir., Portfolio Operations, Corporate Partnerships, Learning Enterprise

**Nikkia Pannell**  
ASU Local Enrollment and Student Success Coach, Learning Enterprise

**Ohad Kadan**  
Charles J. Robel Dean, Prof. of Finance and W. P. Carey Distinguished Chair, Dean's Office

**Pallavi Sharma**  
Data Analyst, Learning Enterprise

**Paul Herbert**  
Buss. Ops Specialist Sr., Learning Enterprise

**Philip Regier**  
University Dean for Educational Initiatives, CEO EdPLus

**Rae Ann Fox**  
Sr. Dir. Dreamscape and Realm 4 Project Acceleration, EdPlus at ASU

**Reneé Cheng**  
Sr. Vice Provost, Dean and Professor, Herberger Institute for Design and the Arts

**Robert Kilman**  
Sr. Dir., Venture Design and Communications, Strategic Initiatives, Learning Enterprise

**Ronald (Lukas) Wenrick**  
Dir., Sr., Learning Innovations, Learning Enterprise

**Ryan Mores**  
Sr. Program Manager, Exec. and Professional Education, College of Global Futures

**Sandra Stauffer**  
Vice Dean and Prof., School of Music, Dance and Theatre

**Sarah Jarboe**  
Instructional Designer, Foundational Learning, Learning Enterprise

**Scott Weatherford**  
Exec. Dir., Universal Pathways, Learning Enterprise

**Sean Beienburg**  
Asst Professor, School of Civic and Economic Thought and Leadership

**Sharon Smith**  
VP Educ. Outreach Partnership, DPC Dean of Students

**Obiageli Sneed**  
Instructional Design Program Mgr., Sr., STEM, ULCs, Learning Enterprise

**Olivia Tejada**  
Online Course Mgr., Stack Leader (English | Writing), Learning Enterprise

**Pat O'Connor**  
Program Coordinator, Core Functions, McCain Institute at Arizona State University

**Paul Gediman**  
Exec. Dir., Marketing and Advancement, MLF Teachers College

**Quintin Boyce**  
Assoc. VP EOSS, Outreach

**Raghu Santanam**  
Sr. Assoc. Dean for Exec. Ed. and McCord Chair in Buss. and Prof., Exec. Ed., Corp. Partnerships and Lifelong Learning

**Richard Avramenko**  
School Dir. and Prof., School of Civic and Economic Thought and Leadership

**Robert Ashcraft**  
Exec. Dir. and Saguaro Professor of Civic Enterprise, Lodestar Center for Philanthropy and Nonprofit Innovation

**Ross Early**  
Knowledge Management Specialist, EdPlus at ASU

**Ryan Chase**  
Director, Sr., Exec. Education, Corporate Partnerships and Lifelong Learning

**Sarah Bixler**  
Dir., Accelerate High School Pathways, Learning Enterprise

**Savanna Conner**  
Online Course Mgr., Stack Leader (English | Writing), Learning Enterprise

**Sean Netzel**  
Course Facilitation Coordinator, Learning Enterprise

**Shamelle Yemofio**  
ASU Local Enrollment and Student Success Coach, Learning Enterprise

**Sharon Hall**  
Assoc. Dean and President Professor, College of Global Futures



**Shawn Kirkilewski-Flora**  
Instructional Designer, Career and Professional Learning, Learning Enterprise

**Stacy Leeds**  
Willard H. Pedrick Dean, Regents and Foundation Prof. of Law, Sandra Day O'Connor College of Law

**Stephanie Alvey**  
Assoc. Dir., Watts College of Public Service and Community Solutions

**Steven Lee**  
Lead UI/UX Designer, Learning Enterprise

**Suzanne Vasquez**  
Exec. Asst., Learning Enterprise

**Tara Williams**  
Dean and Prof., Barrett Honors College, Deans Office

**Tessa Jones**  
Sr. Project Mgr., Product Team, Learning Enterprise

**Trenton Moore**  
Online Course Mgr./Stack Leader (Political Science), Learning Enterprise

**Turner Bohlen**  
Head of Product, Learning Enterprise

**Tylor Coulthard**  
Online Course Mgr., ULCs, Learning Enterprise

**Whitney Marsh**  
Chief of Staff, ASU Prep

**Yash Mahendra Pachchigar**  
Buss. Analyst Principal, Learning Enterprise

**Shawn Faison**  
Software Engineer Principal, Product Team, Learning Enterprise

**Stephanie Petersen**  
Project Mgr., Career and Professional Learning, Learning Enterprise

**Stephen Lay**  
Learner Support Coach, Product Team, Learning Enterprise

**Stuart Rice**  
Sr. Dir., Learning Design, Career and Professional Learning, Learning Enterprise

**Swapna Reddy**  
Asst. Dean and Clinical Associate Prof., College of Health Solutions

**Taylor Dauphin**  
Asst. Dir. of Portfolio Operations, ASU Local, Learning Enterprise

**Tiffany Coleman**  
Sr. Dir. of Program Operations, Learning Enterprise

**Trisha Drake**  
Instructional designer, Career and Professional Learning, Learning Enterprise

**Ty Harned**  
Systems Support Analyst, Learning Enterprise

**Van Anderson**  
Dir. of Collaborative Initiatives, Learning Enterprise

**William Campbell**  
Sr. Visual and Creative Designer, Learning Enterprise

**Yasmin Puhuyesva**  
Project Coordinator, Enterprise Collaboration, Learning Enterprise

**Sierra Ochoa**  
Learning and Co-Creation Program Manager, ASU Art Museum

**Stephanie Powell**  
Systems Support Analyst, Learning Enterprise

**Stephen Toth**  
Assoc. Dean and Professor, New College of Interdisciplinary Arts and Sciences

**Sukhwant Jhaj**  
Dean, University College and Vice Provost for Academic Innovation and Student Achievement

**Taija Hendrix**  
Instructional Designer, Learning Enterprise

**Taylor Stupka**  
Partnership Mgr., Foundational Learning, Learning Enterprise

**Todd Sandrin**  
Vice Provost and Dean

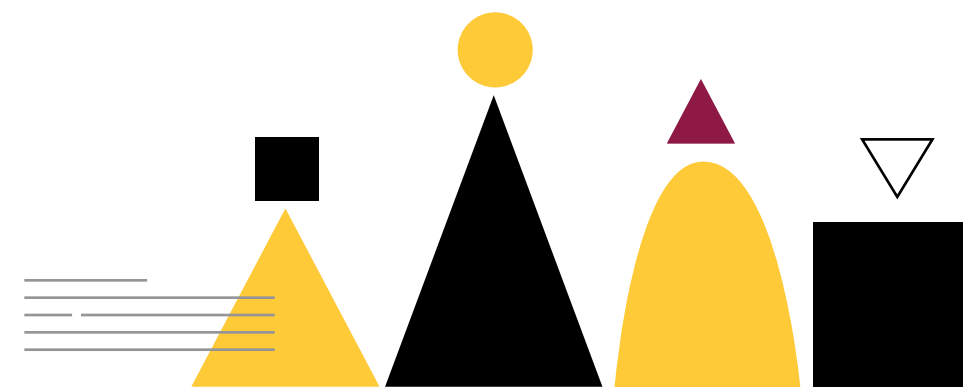
**Trisha Eardley**  
Director, Sr., of Academic Services, CISA, Leadership

**Tyler Galarneau**  
Content Designer, Learning Enterprise

**Wayne Anderson**  
Director, Sr., EdPlus at ASU

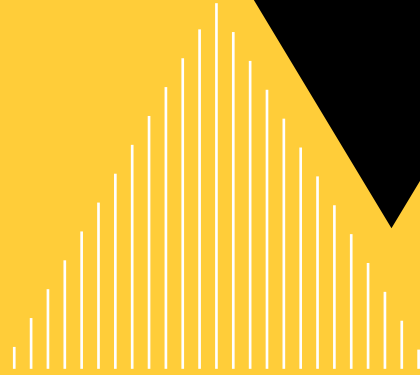
**William Terrill**  
Assoc. Dean of Interdisciplinary and Academic Programming, Watts College of Public Service and Community Solutions

**Yongho (Joey) Choi**  
Online Course Mgr., Stack Leader (ABDA, Google IT), Learning Enterprise



# Learning for all ages at ASU





Partner with us to foster and grow universal access to social and economic opportunity.

# At every stage in life.



**#1**  
in the U.S. for  
innovation



ASU ahead of MIT and Stanford  
— U.S. News & World Report,  
9 years, 2016–24



[learning.asu.edu](https://learning.asu.edu)